

WENDEL LIVESTOCK

12th Annual Angus Production Sale

Monday • **May 9, 2016** • 7 pm
at the farm, near LaMoure, ND

WL

110 Head Sell

57 Angus Bulls

53 Angus Heifers

www.wendellivestock.com

WELCOME

We would like to invite you to attend our annual production sale to be held at the farm near LaMoure, May 9, 2016 at 7 p.m. The bulls will sell first with the heifers to follow. We have videos of all the sale cattle on dvauction.com and is linked to our web site wendellivestock.com which also has photos and supplement information. DV Auction will provide internet bidding and we will have a video sale inside our sale barn and the cattle will be on display before the sale for viewing. Come early to view the sale cattle and have supper with us.



The Wendel Family

The bulls we are offering are fed a high roughage diet. Our scan data shows that these bulls are not fattened but rather grown in hopes to better transition them to a lower energy grass diet that breeding conditions demand. The average adjusted Rib Fat this year is 0.27. Many of the bulls offered for sale are considered suitable for use on heifers. At time of printing, scrotal measurements were not taken and calculated by American Angus Association. Updated scrotal EPDs are available on our web site.

We fatten our steers and those we have purchased back from our customers. These steers are sold to Tyson on the Gene Track Grid and they have performed very well again this year. The first potload of 2015 contained 40 head which had 40% Prime, 77% Prime and CAB and 100% Choice or better with a net premium of \$69.90 per head. Our attention to adding carcass traits to our breeding cattle is paying high dividends in the feed lot. We invite you to come take advantage of the carcass leading genetics we have produced.

We are dedicated to producing cattle that sell above market prices and willing to assist you in finding the right bull to further develop your program. We wish you good luck this cattle season. We hope to see you at the sale.

WENDEL LIVESTOCK

Mike and Shari Wendel • 10213 68th St. SE, LaMoure, ND 58458
(701) 883-5254 • Cell (701) 710-0425 • E-mail: mwendel@drtel.net
www.wendellivestock.com

Dennis Wendel • 6793 102nd Ave. SE, LaMoure, ND 58458
(701) 883-5888 • Cell (701) 793-3511

Shane Wendel • 6480 Hwy. 200, Carrington, ND 58421
(701) 652-2044 • Cell (701) 652-5810 • E-mail: smmcarr@daktel.com



W WENDEL LIVESTOCK

12th Annual Angus Production Sale

Monday • May 9, 2016 • 7 pm
at the farm, near LaMoure, ND

SALE DAY PHONES:

Mike Wendel - (701) 710-0425
Shane Wendel - (701) 652-5810
Vern Frey - (701) 721-0344



AUCTIONEER:

Seth Weishaar

SALE CONSULTANT:

Frey Livestock Sales and Service (701) 721-0344 vernfrey55@gmail.com,
Vern Frey, 107 4th Ave. NW, Towner, ND 58708

LIVESTOCK PUBLICATION REPRESENTATIVES:

Rod Geppert, Angus Journal
Kirby Goettsch, Farm & Ranch Guide
Kris Peterson, Cattle Business Weekly

Buyers unable to attend the sale may send their bids to Vern Frey, the Sale Consultant, Field Managers or Auctioneer.

DIRECTIONS TO THE SALE SITE:

From LaMoure: Take Hwy. 61 north 6 miles, then go east 2 miles on County Road 34, then 1 mile south and then 1 mile west.
From Hwy. 60: Take County Road 34 west 3 miles, then 1 south and 1 west.

TERMS AND CONDITIONS:

Cattle will sell under the suggested Terms and Conditions of the American Angus Association (http://www.angus.org/Pub/suggested_sale_terms.pdf).

SUPPLEMENTAL INFORMATION:

A supplement sheet will be available sale day with Adjusted Scrotal measurements and up-to-date EPDs. Announcements from the auction block take precedence over sale book information.

HERD HEALTH:

Shots- 7-Way with Pinkeye, PregGuard, Anthrax and Hoofrot vaccine, poured.
Cow herd has been tested free of BVD-PI.
Health papers will be available sale day for interstate shipment.

TRUCKING:

Free delivery on all registered lots up to 500 miles. We will work with buyers to assist with delivery.

LIVESTOCK MORTALITY INSURANCE:

To properly insure your investment, James Bessler will be available to assist you with mortality insurance. (815) 762-2641

FOOD AND REFRESHMENTS:

Complimentary Supper and Refreshments.



Visit the Angus Journal® Web site, www.angusjournal.com, and view this sale book online. References: American Angus Association®, AHIR®, AngusSource®, CAB®, Pathfinder®. EPDs current as of April 1, 2016. Updated EPDs can be viewed online at www.angus.org.

Watch and Bid Online at DVAuction.com

DVAuction
Broadcasting Real-Time Auctions

Can't make the sale?

We are pleased to bring you real-time Internet bidding and a live broadcast of this sale through DVAuction. To watch or bid online, simply complete the following steps:

- Visit the DVAuction web site at www.dvauction.com.
- Click on the "Create New Account" tab.
- Enter a user name, password and your contact information.
- Complete the Banking information. (if you are only interested in viewing you can skip this section)
- Select your Time Zone, accept the Terms and Conditions and click, "Create Account"
- Complete the process by answering a few questions, selecting your subscription choices
- Click on "Apply for Bidding" in the upper left corner of your screen to select the sales you wish to bid on
- Be sure to include a personal contact at your bank, we will contact them in order to get a credit reference.
- If you would prefer to be approved using your credit card, call (402) 316-5460.
- Please be sure to apply for bidding at least a day in advance of the sale—every effort will be made to process your application in a timely manner.

DVAuction will contact you once you have been approved to bid. We do not provide buyer numbers until you have purchased a lot in the sale, and that number is only usable for that auction. After the sale, contact the sale owner or manager to make arrangements for payment and delivery of your online purchases.

Please Note: High speed Internet access (DSL, T-1, or Broadband) is required to be able to bid successfully during the sale. If you have any questions, please contact DVAuction at (402) 316-5460 or email support@dvauction.com.

Proxy Bidding: If you can't access a computer during the sale, you can also place a "proxy bid" through DV Auction. Simply follow the instructions listed above, and as the sale date nears, there will be a "Proxy Bidding" link under the sale listing on the main page of DV Auction. You can then place the maximum amount that you'd like to bid, and our system will represent your bid just as if you were there.

WENDEL LIVESTOCK ANGUS BULLS



We flushed two of our top cows to Courage and got a pen full of good bulls. Rarely are bulls your favorite from birth until now, but this calf is mine. Extremely smooth made with added dimension, 591 will demand your attention. He stands square on every corner and is very smooth strided. His dam came from the Brusett dispersion in Montana. She wasn't here long before we decided to move her to donor status. She is a powerful cow with a nice udder that has worked very well no matter what she is mated to. X97 is extremely sound with plenty of flex to her pasterns and moves with ease. 591 has an excellent disposition. Suitable for heifers.

WL Courage 591 - Lot 1

1

WL Courage 591

Birth Date: 3-21-2015 Bull +18390734 Tattoo: 591

Connealy Confidence 0100	Connealy Tobin	BW
Connealy Courage 25L	Becka Gala of Conanga 8281	70
+17302304 Pearl Pammy of Conanga 194	#Vermilion Dateline 7078	205 WT
	Pearl Jam of Conanga 6114	732
		RATIO
		100
		365 WT
		1292
		DAM WR RATIO
		3-105 100

CED	BEPD	WEPD	YEPD	MILK	CW	MARB	RE
+9	+1.1	+52	+93	+24	+22	+13	+49
		Adj. IMF	Ratio	Adj. RE	Ratio	Adj. Rib Fat	Ratio
		2.51	79	16.0	112	.34	126



Brusett Clova Pride X97 - Dam of Lots 1, 10, 22, 27 and 38.



Connealy Courage 25L - Sire of Lots 1, 3, 10, 11, 20, 21, 22, 27, 28, 38 and 51.

2

WL Capitalist 508

Birth Date: 2-13-2015 Bull 18355121 Tattoo: 508

#SAV Final Answer 0035 [ROF]	#Sitz Traveler 8180	BW
Connealy Capitalist 028	SAV Emulous 8145	80
16752262 Prides Pita of Conanga 8821	#CRA Bextor 872 5205 608	205 WT
	Prides Trav of Conanga 6499	793
		RATIO
		112
		365 WT
		1327
		DAM WR RATIO
		1-112 110

CED	BEPD	WEPD	YEPD	MILK	CW	MARB	RE
+4	+1.6	+63	+107	+26	+33	+82	+71
		Adj. IMF	Ratio	Adj. RE	Ratio	Adj. Rib Fat	Ratio
		5.20	142	13.7	100	.27	100

This Capitalist son is a moderate-framed powerhouse bull. The Capitalist sons express as much base width as any bull I have seen. Born with ease and soon to develop into wide-topped, thick made calves, Capitalist sons seem to never disappoint.



WL Capitalist 508 - Lot 2

WENDEL LIVESTOCK ANGUS BULLS

569 is a bull with loads of muscle shape and natural thickness. He is wide-topped with a big hindquarter. The dam of 569 is 953, our Final Answer donor that produced the top-selling bull in our 2014 sale (WL Confidence 392, co-owned with Steve Peterson from Berlin). We have used 392 heavily through AI and are continually impressed with his calves. Another son of 953 roaming our pastures is 127, a War Party son, who has delivered very well with production ratios of 96 on birth to 102 weaning and 103 yearling on his sired calves. 953 is already leaving a big impact on our herd with much more to come. 569 has four brothers in the sale, Lots 11, 20, 21, 28. Suitable for heifers.



WL Courage 569 - Lot 3

3

WL Courage 569

Birth Date: 3-17-2015 Bull #18405609 Tattoo: 569

Connealy Confidence 0100
Connealy Courage 25L
+17302304 Pearl Pammy of Conanga 194

Connealy Tobin
Becka Gala of Conanga 8281
#Vermilion Dateline 7078
Pearl Jam of Conanga 6114



#SAV Final Answer 0035 [RDF]
WL 0035 Fancy Beauty 435-953
16594892 WL 5321 Fancy Beauty 231-435

#Sitz Traveler 8180
SAV Emulous 8145
#CA Future Direction 5321
LBK Fancy Beauty 2K31

BW	66
205 WT	738
RATIO	102
365 WT	1312
DAM WR	RATIO
3-102	106

CED	BEPD	WEPD	YEPD	MILK	CW	MARB	RE
+13	-1.0	+60	+104	+20	+30	+50	+84
Adj. IMF	Ratio	Adj. RE	Ratio	Adj. Rib Fat	Ratio		
4.39	123	14.4	99	.22	85		

4

WL Confidence 5127

Birth Date: 3-26-2015 Bull 18355119 Tattoo: 5127

Connealy Tobin
Connealy Confidence 0100
16761479 Becka Gala of Conanga 8281

#Bon View New Design 208
Della of Conanga 667
#Connealy Thunder [RDF]
Becka Lee of Conanga 37

DR Bismarck 802
WL 802 Miss Queedy 847-0119
16711942 WL GI Miss Queedy 258-847

#+SAV Bismarck 5682 [RDF]
DR Erica 657
#TC Gridiron 258
#LBK Miss Queedy 2K58

BW	80
205 WT	752
RATIO	106
365 WT	1363
DAM WR	RATIO
3-105	113

CED	BEPD	WEPD	YEPD	MILK	CW	MARB	RE
+12	+2	+58	+111	+22	+34	+56	+95
Adj. IMF	Ratio	Adj. RE	Ratio	Adj. Rib Fat	Ratio		
4.49	122	14.8	108	.39	144		

Low birth, higher performance bull that is structurally sound and clean fronted. His dam, 0119, is a young cow that is proving herself with a NR 3/105. If you are looking for a heifer bull with a great dam, 5127 might be the bull. 0119 is the grandam to Lot 1, 2015 sale. Suitable for heifers.



Connealy Confidence 0100 - Sire of Lots 4, 6, 13, 25, 30, 40, 50 and 64.



WL Fortunate 447
- Sold as Lot 1 in last year's sale. Out of the same cow family as Lot 4.



WL Confidence 5127 - Lot 4

WENDEL LIVESTOCK ANGUS BULLS



WL Ten X 542 - Lot 5

5

WL Ten X 542

Birth Date: 3-12-2015 Bull 18356630 Tattoo: 542

#Mytty In Focus [RDF] #SAF Focus of ER
 AAR Ten X 7008 SA Mytty Countess 906
 #15719841 #AAR Lady Kelton 5551 SAV Adaptor 2213
 +HSAF Lady Kelton 504B

#Hoover Dam #SydGen CC&7
 WL HD Pride Lucy 218-194 #Erica of Ellston C124
 +17026452 +Pride Lucy Gal 218 #Rockn D Ambush 1531
 Hyline Pride Lucy 9043

BW	78
205 WT	704
RATIO	99
365 WT	1357
DAM WR	RATIO
2-102	112

CED	BEPD	WEPD	YEPD	MILK	CW	MARB	RE
+7	+3	+58	+118	+27	+47	+89	+86
Tremendous		Adj. IMF	Ratio	Adj. RE	Ratio	Adj. Rib Fat	Ratio
		3.89	106	15.4	112	.32	119

carcass bull with lots of eye appeal. His dam is a product of our embryo program. His grandam, 218, was a tremendous donor that has heavily influenced our herd. His Hoover mother was just one of the great cows produced by the Ambush 218 donor. 218 has 6 daughters in our herd with a combined production record of 21 calves at 104 at weaning. 542 is the highest \$B bull in the sale that will definitely add value to his calves. Suitable for heifers.



WL Confidence 593 - Lot 6

6

WL Confidence 593

Birth Date: 3-21-2015 Bull 18355113 Tattoo: 593

Connealy Tobin #Bon View New Design 208
 Connealy Confidence 0100 Delia of Conanga 667
 16761479 Becka Gala of Conanga 8281 #Connealy Thunder [RDF]
 Becka Lee of Conanga 37

#Hoover Dam #SydGen CC&7
 WL HD Pride Lucy 218-1101 #Erica of Ellston C124
 +17026450 +Pride Lucy Gal 218 #Rockn D Ambush 1531
 Hyline Pride Lucy 9043

BW	76
205 WT	763
RATIO	108
365 WT	1291
DAM WR	RATIO
3-103	107

CED	BEPD	WEPD	YEPD	MILK	CW	MARB	RE
+14	-1.3	+54	+97	+24	+27	+52	+1.08
Another light birth		Adj. IMF	Ratio	Adj. RE	Ratio	Adj. Rib Fat	Ratio
weight bull by		4.85	132	14.0	102	.34	126

Confidence that is backed by a great cow family. 1101 is a flush sister to the dam of the Lot 5 bull with 218 being her dam with daughters producing a combined NR 21/104. Free moving with lots of flex to his pasterns, 593 is great on the move. WR 108, Dam's NR 3/103. Suitable for heifers.



WL Fortunate 562 - Lot 7

7

WL Fortunate 562

Birth Date: 3-15-2015 Bull 18293803 Tattoo: 562

Sinclair Fortunate Son Sinclair Emulate 7XT28
 Mc Cumber Fortunate 213 #Sinclair Blackbird 2P8 7079
 17265901 #+Miss Wix 5139 of Mc Cumber #+BT Right Time 24J
 +Miss Wix 7111 of Mc Cumber

#BC Matrix 4132 #+OCC Emblazon 854E
 WL 4132 Ms Blackcap 064-202 CAF Pure Pride Ext 99
 17351588 WL 802 Ms Blackcap 833-064 DR Bismarck 802
 WL 587 Ms Blackcap 562-833

BW	81
205 WT	753
RATIO	106
365 WT	1297
DAM WR	RATIO
2-105	107

CED	BEPD	WEPD	YEPD	MILK	CW	MARB	RE
+2	+1.6	+61	+102	+25	+37	+09	+70
Son of Fortunate		Adj. IMF	Ratio	Adj. RE	Ratio	Adj. Rib Fat	Ratio
213, this calf will		3.02	82	14.6	107	.19	70

add extra muscle shape and pounds. The 213 sons are deep-quartered, deep-ribbed, square hipped and are extremely structurally sound. His dam is a young Matrix daughter that is well on her way to becoming one of our top cows with an NR of 2/105. 562 has a WR of 106. She just gave birth to her third AI sired calf.



Mc Cumber Fortunate 213

We partnered with Circle V Angus Ranch and McCumber's and purchased this bull from McCumber's 2013 sale. He was the second highest selling bull in the sale. His dam is the Pathfinder donor Miss Wix 5139 of McCumber, out of the poster cow of the Angus breed, Miss Wix 7111 of McCumber. We were looking for a moderate birth, structurally sound, moderate-framed performance bull. 213 is a consistent bull that adds as much muscle expression and shape as any bull we have used. He has definitely met our expectations. His first daughters have calved this spring and are holding their condition very well, are great uddered, and excellent mothers.

WENDEL LIVESTOCK ANGUS BULLS

WL Final Answer 594

8

Birth Date: 3-21-2015 Bull 18354855 Tattoo: 594

#Sitz Traveler 8180	#GDAR Traveler 71	BW
SAV Final Answer 0035 [RDF]	Sitz Everelda Entense 1137	83
#13592905 SAV Emulous 8145	#Bon View Bando 598	205 WT
	SAV Sky Emulous 2124	752
		RATIO
		106
WL E161 Precision 420	#Twin Valley Precision E161 [RDF]	365 WT
WL 420 FoundationLass100-884	Molitor 043 Bkdb A 930-925	1250
16139450 Berbos Foundation Lass 100	#Alberda Traveler 416	DAM WR
	WGA Foundation Lass 997	RATIO
		5-105
		103

CED	BEPD	WEPD	YEPD	MILK	CW	MARB	RE
+8	+1	+54	+94	+25	+21	+42	+54
		Adj. IMF	Ratio	Adj. RE	Ratio	Adj. Rib Fat	Ratio
		2.59	71	14.0	102	.28	104

A son of the great Final Answer bull himself. As many great FA sons that there are, I think the sire himself just may be one of the greatest sires of all time. His sons are great performers and his daughters are great cows. 594's dam produced the second high-selling Lot 1 bull in our 2014 sale. 884 is a great cow that maintains her condition no matter what the environment and posted NR 5/105. 594's grandam has a progeny WR of 103 on 13 calves. 594-WR 106. Suitable for heifers.



WL Final Product 383 - Maternal brother to Lot 8, sold as Lot 1 in our 2014 sale.

9

WL Confidence 584

Birth Date: 3-19-2015 Bull 18355117 Tattoo: 584

Connealy Tobin	#Bon View New Design 208	BW
Connealy Confidence 0100	Delia of Conanga 667	81
16761479 Becka Gala of Conanga 8281	#Connealy Thunder [RDF]	205 WT
	Becka Lee of Conanga 37	711
		RATIO
		100
#Sitz Upward 307R	#Connealy Onward	365 WT
WL 307R Toby Rosebud 529-028	Sitz Henrietta Pride 81M	1292
16712003 #WL GM Toby Rosebud L2-529	#+GAR Grid Maker	DAM WR
	Ahlgrens Toby Rosebud 4335	RATIO
		3-104
		106

CED	BEPD	WEPD	YEPD	MILK	CW	MARB	RE
+12	+1	+57	+109	+22	+38	+54	+75
		Adj. IMF	Ratio	Adj. RE	Ratio	Adj. Rib Fat	Ratio
		3.93	107	13.5	99	.27	100

584 is a moderate, heavy-muscled, calving-ease bull that traces back to our 529 Grid Maker donor. His Upward dam, 028, is a big middled angular cow that has production of 3/104. His 529 grandam has 9 daughters in herd with a combined production ratio of 20/101. This cow family is also very docile and our kids have shown several daughters as 4-H heifers. Suitable for heifers.



10

WL Courage 560

Birth Date: 3-15-2015 Bull +18390736 Tattoo: 560

Connealy Confidence 0100	Connealy Tobin	BW
Connealy Courage 25L	Becka Gala of Conanga 8281	70
+17302304 Pearl Pammy of Conanga 194	#Vermilion Dateline 7078	205 WT
	Pearl Jam of Conanga 6114	735
		RATIO
		100
XCR Image Maker U444	#+HA Image Maker 0415	365 WT
Brusett Clova Pride X97	XCR Beauty R314	1253
16769569 Brusett Clova Pride Q798	MAR Midland Empire 5017	DAM WR
	Brusett Clova Pride 577	RATIO
		3-105
		100

CED	BEPD	WEPD	YEPD	MILK	CW	MARB	RE
I+8	I+1.3	I+52	I+90	I+25	I+22	I+.05	I+.52
		Adj. IMF	Ratio	Adj. RE	Ratio	Adj. Rib Fat	Ratio
		2.84	90	13.9	97	.28	104

A flush brother to the Lot 1 bull. A bull with lots of natural thickness, wide-topped and big-quartered. The Courage sons are extremely sound and smooth striding on the move. His flawless Image Maker donor mother has had a very positive impact on our program. Suitable for heifers.



WL Courage 560 - Lot 10

11

WL Courage 585

Birth Date: 3-20-2015 Bull +18405611 Tattoo: 585

Connealy Confidence 0100	Connealy Tobin	BW
Connealy Courage 25L	Becka Gala of Conanga 8281	70
+17302304 Pearl Pammy of Conanga 194	#Vermilion Dateline 7078	205 WT
	Pearl Jam of Conanga 6114	698
		RATIO
		96
#SAV Final Answer 0035 [RDF]	#Sitz Traveler 8180	365 WT
WL 0035 Fancy Beauty 435-953	SAV Emulous 8145	1237
16594892 WL 5321 Fancy Beauty 231-435	#CA Future Direction 5321	DAM WR
	LBK Fancy Beauty 2K31	RATIO
		3-102
		100

CED	BEPD	WEPD	YEPD	MILK	CW	MARB	RE
I+15	-1.6	+52	+91	+20	+24	+39	+1.04
		Adj. IMF	Ratio	Adj. RE	Ratio	Adj. Rib Fat	Ratio
		3.64	102	15.4	106	.39	150

A flush brother of Lot 3 that is packed full of muscle. If you are looking to add extra width and dimension be sure to find 585. Suitable for heifers.



WL Courage 585 - Lot 11

WENDEL LIVESTOCK ANGUS BULLS



WL Confidence 532 - Lot 12

12 WL Confidence 532

Birth Date: 3-10-2015 Bull 18292975 Tattoo: 532

Connealy Confidence 0100 Connealy Tobin
 WL Confidence 392 Becka Gala of Conanga 8281
 17636575 WL 0035 Fancy Beauty 435-953 #SAV Final Answer 0035 [RDF]
 WL 5321 Fancy Beauty 231-435

#Connealy Final Product Connealy Product 568
 WL FP Queen 115-321 #Ebonista of Conanga 471
 17633054 #WL 2417 Queen 986-115 #+Werner War Party 2417
 WL 5398 Queen 707-986

BW	79
205 WT	798
RATIO	113
	365 WT
	1225
DAM WR	RATIO
1-113	101

CED	BEPD	WEPD	YEPD	MILK	CW	MARB	RE
+6	+8	+60	+101	+25	+33	+37	+1.04
Adj. IMF	Ratio	Adj. RE	Ratio	Adj. Rib Fat	Ratio		
2.69	73	14.5	106	.24	89		

A long-bodied son of WL Confidence 392. His Final Product first calf dam looks to be a great brood cow prospect with a NR 1/113. 392's progeny are free moving, agile and quick to nurse at birth. 532 had a 79 lb. birth wt. and 113 weaning ratio, an impressive spread.

13 WL Confidence 563

Birth Date: 3-15-2015 Bull 18355105 Tattoo: 563

Connealy Tobin #Bon View New Design 208
 Connealy Confidence 0100 Delia of Conanga 667
 16761479 Becka Gala of Conanga 8281 #Connealy Thunder [RDF]
 Becka Lee of Conanga 37

#SAV Final Answer 0035 [RDF] #Sitz Traveler 8180
 WL 0035 Lady 0746-240 SAV Emulous 8145
 17351594 RB Lady CC&7-746-0746 #SydGen CC&7
 #+RB Lady Focus 308-746

BW	82
205 WT	736
RATIO	104
	365 WT
	1323
DAM WR	RATIO
2-96	109

CED	BEPD	WEPD	YEPD	MILK	CW	MARB	RE
+13	-.1	+56	+106	+20	+31	+60	+7.5
Adj. IMF	Ratio	Adj. RE	Ratio	Adj. Rib Fat	Ratio		
4.43	121	12.9	94	.31	115		

A Confidence son that is very well put together. 563 has lots of muscle expression for a sure fire calving ease bull. He has good weaning performance at 104. Suitable for heifers.

14 WL Objective 5153

Birth Date: 4-3-2015 Bull 18353822 Tattoo: 5153

#SS Objective T510 0T26 #SS Traveler 6807 T510
 Mohnen Objective 1220 SS Miss Rita R011 7R8
 16760021 +Mohnen Erianna 2576 #+Leachman Right Time
 Mohnen Erianna 129

S Expedition 788 #R&S Expedition 1404 [RDF]
 WL 788 Ms Queedy 651-0118 #S Rosemary 247
 #16711967 WL LO Ms Queedy 258-651 #Connealy Lead On
 #LBK Miss Queedy 2K58

BW	92
205 WT	802
RATIO	113
	365 WT
	1229
DAM WR	RATIO
4-107	101

CED	BEPD	WEPD	YEPD	MILK	CW	MARB	RE
-3	+3.7	+59	+96	+31	+40	+1.12	+28
Adj. IMF	Ratio	Adj. RE	Ratio	Adj. Rib Fat	Ratio		
2.90	79	14.1	103	.17	63		

A big growth bull with loads of performance on both sides of his pedigree. He is sure to add pounds to your calf crop. His dam is out of the co-high-selling S Expedition 788 from the Spickler Ranch. The 788's cows are good footed, nice uddered, very functional females. 3rd heaviest 205 weight at 802 lbs.

15 WL In Focus 506

Birth Date: 2-12-2015 Bull 18358177 Tattoo: 506

#SAF Focus of ER #SAF Fame
 Mytty In Focus [RDF] GDAR Forever Lady 246
 #13880818 Mytty Countess 906 #Sitz Alliance 6595
 Baldrige Countess 357

Connealy Irish 0204 Connealy Wrangler
 WL 0204 Zara 146-331 #Black Crest of Conanga 5640
 17633041 #+WL 307R Zara 577-146 #Sitz Upward 307R
 Mohnen Zara 577

BW	70
205 WT	748
RATIO	106
	365 WT
	1268
DAM WR	RATIO
1-106	105

CED	BEPD	WEPD	YEPD	MILK	CW	MARB	RE
+13	-1.8	+53	+98	+27	+40	+80	+24
Adj. IMF	Ratio	Adj. RE	Ratio	Adj. Rib Fat	Ratio		
5.05	138	12.7	93	.26	96		

A son of the great Mytty In Focus bull with proven calving ease. 506 is an extremely thick-muscled individual with extra depth of body and spring of rib. 506 has a CED of +13 and low BW EPD of -1.8, a definite calving ease bull. WR 106, dam's NR 1/106. Suitable for heifers.



WL Confidence 563 - Lot 13



WL Objective 5153 - Lot 14



WL In Focus 506 - Lot 15

WENDEL LIVESTOCK ANGUS BULLS

16

WL Final Product 551

Birth Date: 3-13-2015 Bull 18363160 Tattoo: 551

Connealy Product 568
Connealy Final Product
#15848422 #Ebonista of Conanga 471

#GAR Retail Product
Pride Fine of Conanga 566
#Connealy Deep Canyon 454
Ebonisa of Conanga 5469

WL Rainmaker 308
WL 308 Ms Blackcap 319-562
#15252840 LBK Ms Blackcap 3K19

#Basin Rainmaker 814Z
Molitor Lady Polly 623-198
LBK The Diversionist 120
LBK MS Blackcap 38K4

BW	84
205 WT	738
RATIO	104
365 WT	1271
DAM WR	RATIO
9-100	105

CED	BEPD	WEPD	YEPD	MILK	CW	MARB	RE
+3	+1.2	+52	+91	+27	+26	+35	+39
Adj. IMF	Ratio	Adj. RE	Ratio	Adj. Rib Fat	Ratio		
3.50	95	13.3	97	.29	107		

A Final Product son that covers most all categories nicely. A nicely balanced bull out of a cow that has been a solid producer for 10 years, that still has a nice udder and breeds back AI most every year. NR 9/100.



WL Ten X 582 - Lot 19

19

WL Ten X 582

Birth Date: 3-19-2015 Bull 18356615 Tattoo: 582

#Mytty In Focus (RDF)
AAR Ten X 7008 SA
#15719841 #AAR Lady Kelton 5551

#SAF Focus of ER
Mytty Countess 906
SAV Adaptor 2213
+HSAF Lady Kelton 504B

#OCC Missing Link 830M
WL 830M Jilt 1665-296
+17367780 +Mohnen Jilt 1665

OCC Headliner 661H
+OCC Dixie Erica 946K
#+Wulffs Ext 6106
#Mohnen Jilt 910

BW	78
205 WT	686
RATIO	97
365 WT	1209
DAM WR	RATIO
2-101	100

CED	BEPD	WEPD	YEPD	MILK	CW	MARB	RE
+8	-2	+52	+96	+24	+43	+63	+74
Adj. IMF	Ratio	Adj. RE	Ratio	Adj. Rib Fat	Ratio		
3.67	100	14.2	104	.21	78		

A full brother to the Lot 3 bull in our 2015 sale. This big-bodied, deep-sided, big-quartered son of Ten X will catch your eye on sale day. This quiet mannered son of an outstanding daughter of OCC Missing Link did a great job. 582 has a famous 3rd dam. Mohnen Jilt 910 is a Pathfinder noted as the dam of many bulls in stud. His grandam, 1665, is a flushmate to the Famous Mohnen Jilt 1665. High production is loaded in this pedigree. Suitable for heifers.



WL Ten X 410 - Brother-in-blood to Lot 19.

17

WL Fortunate 567

Birth Date: 3-15-2015 Bull 18293804 Tattoo: 567

Sinclair Fortunate Son
Mc Cumber Fortunate 213
17265901 #+Miss Wix 5139 of Mc Cumber

Sinclair Emulate 7XT28
#Sinclair Blackbird 2P8 7079
#+BT Right Time 24J
+Miss Wix 7111 of Mc Cumber

S Expedition 788
WL 788 Pride Lucy 218-94
16598849 +Pride Lucy Gal 218

#R&S Expedition 1404 (RDF)
#S Rosemary 247
#Rockn D Ambush 1531
Hylene Pride Lucy 9043

BW	82
205 WT	711
RATIO	100
365 WT	1124
DAM WR	RATIO
4-105	93

CED	BEPD	WEPD	YEPD	MILK	CW	MARB	RE
+5	+1.7	+54	+93	+30	+27	+37	+63
Adj. IMF	Ratio	Adj. RE	Ratio	Adj. Rib Fat	Ratio		
3.37	92	14.7	107	.19	70		

A larger framed Fortunate 213 son out of a dam by S Expedition 788. His cow family goes back to the great 218 donor female with a production record of NR 5/110. A great maternal herd sire crossed with a great maternal cow family. His dam, 94, has a NR 4/105.

18

WL Ten X 558

Birth Date: 3-14-2015 Bull 18356650 Tattoo: 558

#Mytty In Focus (RDF)
AAR Ten X 7008 SA
#15719841 #AAR Lady Kelton 5551

#SAF Focus of ER
Mytty Countess 906
SAV Adaptor 2213
+HSAF Lady Kelton 504B

#SAV Final Answer 0035 (RDF)
WL 0035 Queen 321-733
15901959 #WL H020 Queen 789-321

#Sitz Traveler 8180
SAV Emulous 8145
Sir Wms Famous H020
#Bandos Queen 789

BW	86
205 WT	688
RATIO	97
365 WT	1357
DAM WR	RATIO
6-101	112

CED	BEPD	WEPD	YEPD	MILK	CW	MARB	RE
+7	+9	+55	+114	+25	+40	+71	+60
Adj. IMF	Ratio	Adj. RE	Ratio	Adj. Rib Fat	Ratio		
2.78	76	15.0	109	.30	111		

A larger framed Ten X son that has a lot of performance. His dam produced the Lot 4 in our 2015 sale. His dam is a Final Answer daughter that is a big middle, deep-sided cow, which produces a calf towards the top every year. WR 97. Suitable for heifers.



WL Ten X 558 - Lot 18

WENDEL LIVESTOCK ANGUS BULLS



WL Confidence 392 - Maternal brother to Lots 3, 11, 20, 21, 28 and herd bull WL War Party 127.

23 WL Ten X 546

Birth Date: 3-13-2015 Bull 18353823 Tattoo: 546
 #AAR Ten X 7008 SA #Mytty In Focus [RDF]
 WL Ten X 356 #AAR Lady Kelton 5551
 17636587 +WL 307R Zara 577-192 #Sitz Upward 307R
 Mohnen Zara 577
 +WL Final Answer 071 #SAV Final Answer 0035 [RDF]
 WL 071 Toby Rosebud 028-3171 Meadow Mist 036-190-206
 17633068 WL 307R Toby Rosebud 529-028 #Sitz Upward 307R
 #WL GM Toby Rosebud L2-529

CED	BEPD	WEPD	YEPD	MILK	CW	MARB	RE
+6	+1.3	+65	+115	+28	+49	+98	+56
Adj. IMF	Ratio	Adj. RE	Ratio	Adj. Rib Fat	Ratio		
5.08	138	13.0	95	.24	89		

A son of 356, a Ten X son that we retained from 2014. His sons have loads of power along with eye appeal. 356's grandam is the great 577 Mohnen Zara donor dam that had 70 progeny registered and is the dam to ABS calving ease sire Mohnen Modern Design. WR 109, dam's NR 1/109.



WL Confidence 590 - Lot 24

20 WL Courage 5114

Birth Date: 3-24-2015 Bull +18405616 Tattoo: 5114
 Connealy Confidence 0100 Connealy Tobin
 Connealy Courage 25L Becka Gala of Conanga 8281
 +17302304 Pearl Pammy of Conanga 194 #Vermilion Dateline 7078
 Pearl Jam of Conanga 6114
 #SAV Final Answer 0035 [RDF] #Sitz Traveler 8180
 WL 0035 Fancy Beauty 435-953 SAV Emulous 8145
 16594892 WL 5321 Fancy Beauty 231-435 #CA Future Direction 5321
 LBK Fancy Beauty 2K31

CED	BEPD	WEPD	YEPD	MILK	CW	MARB	RE
I+15	+.1	+55	+93	+20	+25	+40	+1.13
Adj. IMF	Ratio	Adj. RE	Ratio	Adj. Rib Fat	Ratio		
3.68	103	16.7	115	.23	88		

Another flush son of the great 953 donor dam. Lots 3, 11, 21, 28. Suitable for heifers.

21 WL Courage 5122

Birth Date: 3-25-2015 Bull +18405618 Tattoo: 5122
 Connealy Confidence 0100 Connealy Tobin
 Connealy Courage 25L Becka Gala of Conanga 8281
 +17302304 Pearl Pammy of Conanga 194 #Vermilion Dateline 7078
 Pearl Jam of Conanga 6114
 #SAV Final Answer 0035 [RDF] #Sitz Traveler 8180
 WL 0035 Fancy Beauty 435-953 SAV Emulous 8145
 16594892 WL 5321 Fancy Beauty 231-435 #CA Future Direction 5321
 LBK Fancy Beauty 2K31

CED	BEPD	WEPD	YEPD	MILK	CW	MARB	RE
I+15	+.6	+54	+91	+20	+24	+34	+96
Adj. IMF	Ratio	Adj. RE	Ratio	Adj. Rib Fat	Ratio		
3.15	88	14.7	101	.23	88		

Flush brother to Lots 3, 11, 20, 28. Suitable for heifers.

24 WL Confidence 590

Birth Date: 3-21-2015 Bull 18292974 Tattoo: 590
 Connealy Confidence 0100 Connealy Tobin
 WL Confidence 392 Becka Gala of Conanga 8281
 17636575 WL 0035 Fancy Beauty 435-953 #SAV Final Answer 0035 [RDF]
 WL 5321 Fancy Beauty 231-435
 #Connealy Consensus 7229 Connealy Consensus
 WL 7229 Blackbird 913-3108 Blue Lilly of Conanga 16
 17633051 WL 307R Blackbird 740-913 #Sitz Upward 307R
 WL 1916 Blackbird 925-740

CED	BEPD	WEPD	YEPD	MILK	CW	MARB	RE
+5	+1.9	+63	+105	+26	+40	+54	+78
Adj. IMF	Ratio	Adj. RE	Ratio	Adj. Rib Fat	Ratio		
3.12	85	13.3	97	.23	85		

The son of a first calf heifer that crushed the scale at weaning. This WL Confidence 392 son has extra length, base width and excellent structure.

22 WL Courage 535

Birth Date: 3-11-2015 Bull +18390739 Tattoo: 535
 Connealy Confidence 0100 Connealy Tobin
 Connealy Courage 25L Becka Gala of Conanga 8281
 +17302304 Pearl Pammy of Conanga 194 #Vermilion Dateline 7078
 Pearl Jam of Conanga 6114
 XCR Image Maker U444 #+HA Image Maker 0415
 Brusett Clova Pride X97 XCR Beauty R314
 16769569 Brusett Clova Pride Q798 MAR Midland Empire 5017
 Brusett Clova Pride 577

CED	BEPD	WEPD	YEPD	MILK	CW	MARB	RE
I+8	I+1.3	I+52	I+90	I+25	I+16	I+.04	I+.50
Adj. IMF	Ratio	Adj. RE	Ratio	Adj. Rib Fat	Ratio		
2.81	89	13.7	96	.21	78		

Another flush son of the great X97 donor dam. Flush brother to Lots 1, 10, 27. Suitable for heifers.

Videos of the cattle available on our web site Mid-April
www.wendellivestock.com

WENDEL LIVESTOCK ANGUS BULLS



WL Confidence 5124 - Lot 25

25 WL Confidence 5124

Birth Date: 3-25-2015 Bull 18355124 Tattoo: 5124

Connealy Tobin Connealy Confidence 0100 16761479	#Bon View New Design 208 Delia of Conanga 667 #Connealy Thunder [RDF] Becka Lee of Conanga 37	BW 79 205 WT 739 RATIO 104 365 WT 1221 RATIO 6-110 101
WL IF Ms Blackcap 562-712 15880060	#Mytty In Focus [RDF] #SAF Focus of ER Mytty Countess 906 WL Rainmaker 308 LBK Ms Blackcap 3K19	

CED	BEPD	WEPD	YEPD	MILK	CW	MARB	RE
+14	-1.0	+47	+82	+25	+24	+4.7	+69
A Confidence son out of a		Adj. IMF	Ratio	Adj. RE	Ratio	Adj. Rib Fat	Ratio
		3.98	108	14.2	104	.32	119

larger framed In Focus cow that brings home a big calf every fall. She has 2 daughters retained in the herd. 712 has an impressive NR 6/110. Suitable for heifers.



WL Signature 571 - Lot 26

26 WL Signature 571

Birth Date: 3-18-2015 Bull 18361169 Tattoo: 571

Boyd Signature 1014 16916267	#Kesslers Frontman R001 Kesslers Bell 0024 Boyd Next Day 6010 +Boyd Erica Dianna 606	BW 80 205 WT 694 RATIO 98 365 WT 1195 RATIO 6-101 99
WL 0035 Queen 550-823 16139424	#SAV Final Answer 0035 [RDF] #Sitz Traveler 8180 SAV Emulous 8145 EAR Scotch Cap 755 Marshalls Queen 494	

CED	BEPD	WEPD	YEPD	MILK	CW	MARB	RE
+5	+1.2	+61	+107	+27	+33	+3.4	+56
A Signature son that is out of		Adj. IMF	Ratio	Adj. RE	Ratio	Adj. Rib Fat	Ratio
		2.35	64	12.4	91	.28	104

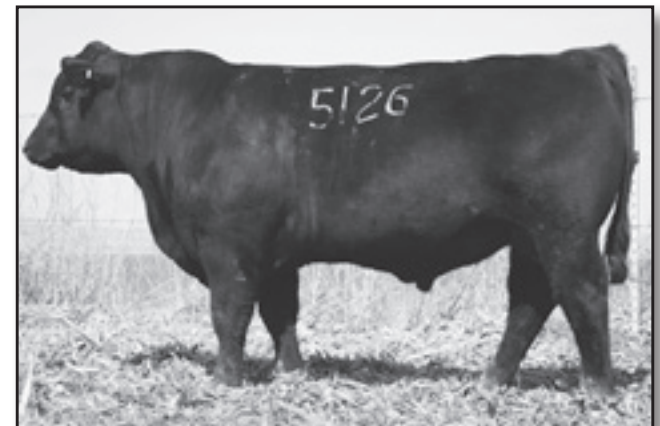
an outstanding cow. She is a deep-sided, big-bodied cow that fits the ideal category. 823 is really sound and stands square on her feet and legs with plenty of flex to her pasterns. Dam's NR 6/101.

27 WL Courage 5107

Birth Date: 3-23-2015 Bull +18390729 Tattoo: 5107

Connealy Confidence 0100 Connealy Courage 25L +17302304	Pearl Pammy of Conanga 194	Connealy Tobin Becka Gala of Conanga 8281 #Vermilion Dateline 7078 Pearl Jam of Conanga 6114	BW 84 205 WT 728 RATIO 100 365 WT 1219 RATIO 3-105 98
XCR Image Maker U444 Brusett Clova Pride X97 16769569	#+HA Image Maker 0415 XCR Beauty R314 MAR Midland Empire 5017 Brusett Clova Pride 577		

CED	BEPD	WEPD	YEPD	MILK	CW	MARB	RE
I+8	+1.5	+50	+87	+24	+21	-.02	+41
Another flush brother to Lots 1, 10, 22, 38. Suitable for heifers.		Adj. IMF	Ratio	Adj. RE	Ratio	Adj. Rib Fat	Ratio
		2.34	66	12.2	84	.24	92



WL Courage 5126 - Lot 28

28 WL Courage 5126

Birth Date: 3-26-2015 Bull +18405614 Tattoo: 5126

Connealy Confidence 0100 Connealy Courage 25L +17302304	Pearl Pammy of Conanga 194	Connealy Tobin Becka Gala of Conanga 8281 #Vermilion Dateline 7078 Pearl Jam of Conanga 6114	BW 84 205 WT 731 RATIO 101 365 WT 1192 RATIO 3-102 96
WL 0035 Fancy Beauty 435-953 16594892	WL 5321 Fancy Beauty 231-435	#SAV Final Answer 0035 [RDF] #Sitz Traveler 8180 SAV Emulous 8145 #CA Future Direction 5321 LBK Fancy Beauty 2K31	

CED	BEPD	WEPD	YEPD	MILK	CW	MARB	RE
I+15	-.1	+52	+87	+20	+22	+4.5	+91
Another flush brother to Lots 3, 11, 20, 21. Suitable for heifers.		Adj. IMF	Ratio	Adj. RE	Ratio	Adj. Rib Fat	Ratio
		4.14	116	13.8	95	.22	85

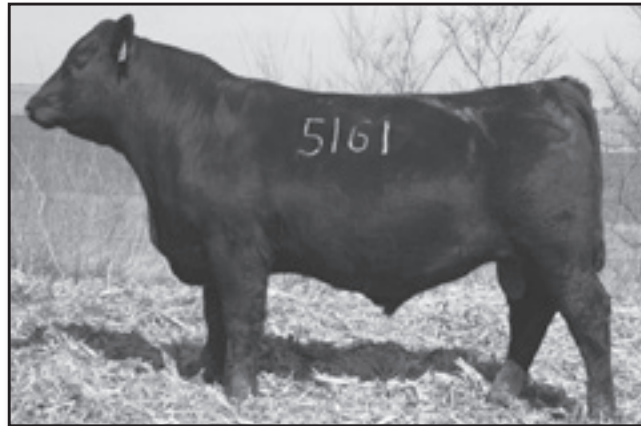
29 WL Right Answer 5137

Birth Date: 3-27-2015 Bull 18354874 Tattoo: 5137

Connealy Confidence 0100 Connealy Right Answer 746 #15832750	Happy Dell of Conanga 262	Connealy Tobin Becka Gala of Conanga 8281 #Vermilion Dateline 7078 Pearl Jam of Conanga 6114	BW 84 205 WT 744 RATIO 105 365 WT 1277 RATIO 8-99 105
Connealy Feature Attraction Brusett Eriskay P606 15546602	#Brusett Ext Eriskay N449	#SAV Final Answer 0035 [RDF] #Sitz Traveler 8180 SAV Emulous 8145 #Hyline Right Time 338 Happy Daze of Conanga 6260	

CED	BEPD	WEPD	YEPD	MILK	CW	MARB	RE
+4	+1.7	+57	+107	+29	+31	+7.6	-.08
The only son of Right Answer in the sale, he definitely earned his right to be here. Out of a larger framed, good uddered cow. 5137 is a high growth bull that will add extra stretch and improve weaning weights and carcass weights.		Adj. IMF	Ratio	Adj. RE	Ratio	Adj. Rib Fat	Ratio
		5.11	139	11.4	83	.31	115

WENDEL LIVESTOCK ANGUS BULLS



WL War Party 5161 - Lot 32

32 WL War Party 5161

Birth Date: 4-10-2015 Bull 18353839 Tattoo: 5161

#+Werner War Party 2417 #Connealy Onward
 +BAAR USA Lady Jaye 489
 17032488 WL 0035 Fancy Beauty 435-953 #SAV Final Answer 0035 [RDF]
 WL 5321 Fancy Beauty 231-435

LD Traveling Hank 411 #DHD Traveler 6807
 Molitor 411 Eileen G12-515 Molitor 473 Pride 8432
 #14971713 SAF G12 of E56 Dividend #TC Dividend 963 [RDF]
 SAF E56 of 661 Max

BW	83
205 WT	764
RATIO	110
365 WT	1265
DAM WR	9-103
RATIO	100

CED	BEPD	WEPD	YEPD	MILK	CW	MARB	RE
+7	+4	+50	+92	+27	1+30	1+.39	1+.66
Adj. IMF	Ratio	Adj. RE	Ratio	Adj. Rib Fat	Ratio	Ratio	Ratio
4.13	100	14.1	100	.33	100	100	100

Another War Party 127 son by our time-tested LD Traveling Hank 411 dam with a NR of 9/103. A moderate-framed powerhouse sire crossed with a never-miss dam deserves a look on sale day. Suitable for heifers.



WL In Sure 515 - Lot 33

33 WL In Sure 515

Birth Date: 2-16-2015 Bull 18354920 Tattoo: 515

#Mytty In Focus [RDF] #SAF Focus of ER
 Connealy In Sure 8524 Mytty Countess 906
 16205036 Entreena of Conanga 657 #Connealy Onward
 Enty of Conanga 5657

Connealy Irish 0204 Connealy Wrangler
 WL 0204 Pride Lucy 826-326 #Black Crest of Conanga 5640
 17633063 #WL 4200 Pride Lucy 218-826 #SAV Net Worth 4200
 +Pride Lucy Gal 218

BW	83
205 WT	725
RATIO	102
365 WT	1176
DAM WR	1-102
RATIO	97

CED	BEPD	WEPD	YEPD	MILK	CW	MARB	RE
+10	+1.4	+50	+90	+30	+40	+83	+84
Adj. IMF	Ratio	Adj. RE	Ratio	Adj. Rib Fat	Ratio	Ratio	Ratio
3.71	101	14.0	102	.28	104	104	104

The only In Sure son in the offering, by a granddaughter of the great 218 donor dam. A bull with extra length and muscle, produced by a first calf heifer. Suitable for heifers.



WL War Party 5152 - Lot 31

31 WL War Party 5152

Birth Date: 4-4-2015 Bull 18353821 Tattoo: 5152

#+Werner War Party 2417 #Connealy Onward
 WL War Party 127 +BAAR USA Lady Jaye 489
 17032488 WL 0035 Fancy Beauty 435-953 #SAV Final Answer 0035 [RDF]
 WL 5321 Fancy Beauty 231-435

#+Rito 112 of 2536 Rito 616 #Rito 616 of 4B20 6807
 WL 112 Fancy Beauty 237-5103 GAR Precision 2536
 15347820 LBK Fancy Beauty 2K37 +Hoff Vision SC 3303 304
 LBK Fancy Beauty K267

DAM WR	5-104
RATIO	112

CED	BEPD	WEPD	YEPD	MILK	CW	MARB	RE
+5	+1.3	+59	+102	+29	+42	+51	+43
Adj. IMF	Ratio	Adj. RE	Ratio	Adj. Rib Fat	Ratio	Ratio	Ratio
4.22	115	13.4	98	.38	141	141	141

A son of our WL War Party 127 bull that we retained back in 2011. He has proven himself year after year. His disposition is great. 127's dam is the 953 donor dam of Lots 3, 11, 20, 21, 28 and WL 392 Confidence. This bull is packed with loads of muscle dimension and shape. Check him out, you won't miss this bull. The 127's are good structured and have proven to be great producers of excellent females. Dam's NR 5/104, WR 114.



WL War Party 127 - Sire of Lots 31, 32, 54, 63 and 77.

WENDEL LIVESTOCK ANGUS BULLS



WL Objective 5158 - Lot 34

34 WL Objective 5158

Birth Date: 4-8-2015 Bull 18353820 Tattoo: 5158

#SS Objective T510 OT26
Mohnen Objective 1220
16760021 +Mohnen Erianna 2576

#SS Traveler 6807 T510
SS Miss Rita R011 7R8
#+Leachman Right Time
Mohnen Erianna 129

#Connealy Mentor 7374
WL 7374 Mignonne 601-212
17351602 WL 2878 Mignonne 797-601

#GAR Retail Product
#Executa of Conanga 939
#+Rito 2 878 of 2536 BVND 878
Molitor 711 Mignonne 981-797

BW	79
205 WT	832
RATIO	117
365 WT	1278
DAM WR	RATIO
2-109	105

CED	BEPD	WEPD	YEPD	MILK	CW	MARB	RE
+5	+1.2	+64	+100	+26	+34	+.25	+.65
Adj. IMF	Ratio	Adj. RE	Ratio	Adj. Rib Fat	Ratio		
3.38	92	15.2	111	.29	107		

A big growth bull that topped the weights at weaning, pushing the scale to 832 lbs. This performance king is by a dam of Mentor that produced the Lot 14 bull in our 2015 sale. 5158 has a WW ratio of 117 and dam's NR 2/109.



WL Ten X 356 - Sire of Lots 23 and 36.

36 WL Ten X 531

Birth Date: 3-9-2015 Bull 18353835 Tattoo: 531

#AAR Ten X 7008 SA
WL Ten X 356
17636587 +WL 307R Zara 577-192

#Mytty In Focus [RDF]
#AAR Lady Kelton 5551
#Sitz Upward 307R
Mohnen Zara 577

Connealy Confidence 0100
WL 0100 Eileen May 134-315
17633024 WL 1356 Eileen May 770-134

Connealy Tobin
Becka Gala of Conanga 8281
#+Mohnen Dynamite 1356
WL 80R Eileen May G12-770

BW	75
205 WT	720
RATIO	102
365 WT	1195
DAM WR	RATIO
1-102	99

CED	BEPD	WEPD	YEPD	MILK	CW	MARB	RE
+8	+.9	+55	+97	+22	+40	+.73	+.81
Adj. IMF	Ratio	Adj. RE	Ratio	Adj. Rib Fat	Ratio		
4.71	128	14.2	104	.34	126		

A son of our 356 Ten X, is a moderate-framed, super correct and expressive muscled calf. By a Confidence dam that is great structured, neat uddered and clean fronted. WR 102, dam's NR 1/102. Suitable for heifers.



WL Mentor 572 - Lot 35

35 WL Mentor 572

Birth Date: 3-18-2015 Bull 18354871 Tattoo: 572

#GAR Retail Product
Connealy Mentor 7374
#15832714 #Executa of Conanga 939

#GAR Precision 1680
+GAR Ext 4927
#Jauer 353 Traveler 589 27
#Exec of Conanga 6940

#+Werner War Party 2417
WL 2417 Miss Bando L5-161
#17054162 Ahlgrens Miss Bando 4655

#Connealy Onward
+BAAR USA Lady Jaye 489
#+SAF 598 Bando 5175
Ahlgrens Estella 4115

BW	80
205 WT	744
RATIO	105
365 WT	1256
DAM WR	RATIO
3-107	104

CED	BEPD	WEPD	YEPD	MILK	CW	MARB	RE
+4	+1.0	+55	+101	+25	+42	+.33	+.93
Adj. IMF	Ratio	Adj. RE	Ratio	Adj. Rib Fat	Ratio		
2.64	72	15.5	113	.30	111		

A son of Mentor that is by a War Party Pathfinder Dam. 572 has plenty of muscle expression and performance. A lot of muscle and performance is bred in to this bull. WR 105, dam's NR 3/107.

37 WL Upward 595

Birth Date: 3-21-2015 Bull 18354896 Tattoo: 595

#Connealy Onward
Sitz Upward 307R
#14963730 Sitz Henrietta Pride 81M

#Connealy Lead On
Altune of Conanga 6104
#Sitz Value 7097
Sitz Henrietta Pride 1370

#+Lemmon Newline C804
WL C804 Everelda Intense 994
+16443018 +BT Everelda Intense 9F

#B/R New Design 036
White Fence Pride H1
GT Maximizer
Sitz Everelda Intense 1905

BW	89
205 WT	706
RATIO	100
365 WT	1239
DAM WR	RATIO
5-96	103

CED	BEPD	WEPD	YEPD	MILK	CW	MARB	RE
+2	+2.1	+52	+98	+29	+49	+.22	+.78
Adj. IMF	Ratio	Adj. RE	Ratio	Adj. Rib Fat	Ratio		
1.94	53	15.6	114	.23	85		

An upward son with lots of performance by his royally bred dam. His grandam is the famous BT Everelda Intense 9F and third dam is Sitz Everelda Intense 1905. Upward performance with maternal strength is the result of Lot 37.

38 WL Courage 5100

Birth Date: 3-22-2015 Bull +18390731 Tattoo: 5100

Connealy Confidence 0100
Connealy Courage 25L
+17302304 Pearl Pammy of Conanga 194

Connealy Tobin
Becka Gala of Conanga 8281
#Vermilion Dateline 7078
Pearl Jam of Conanga 6114

XCR Image Maker U444
Brusett Clova Pride X97
16769569 Brusett Clova Pride Q798

#+HA Image Maker 0415
XCR Beauty R314
MAR Midland Empire 5017
Brusett Clova Pride 577

BW	75
205 WT	688
RATIO	100
365 WT	1221
DAM WR	RATIO
3-105	100

CED	BEPD	WEPD	YEPD	MILK	CW	MARB	RE
1-8	1-1.3	1-52	1-90	1-25	1-20	1-22	1-48
Adj. IMF	Ratio	Adj. RE	Ratio	Adj. Rib Fat	Ratio		
4.50	142	13.4	94	.26	96		

Another flush brother to Lots 1, 10, 22, 27. 5100 is long-bodied and extremely sound, just like his brothers. Suitable for heifers.

WENDEL LIVESTOCK ANGUS BULLS



WL Packer 5163 - Lot 39



SAV Final Answer 0035 - Sire of Lots 8 and 42.

39 WL Packer 5163

Birth Date: 4-10-2015 Bull 18353832 Tattoo: 5163

S Packer 2439 17449560 S Rita 8413		#Connealy Packer 547		#Feltons Meat Packer 62 Bestrelle of Conanga 539 S Grid Maker 5131 S Rita 4309		BW 75
Brusett 520 X64 16769549 #Brusett 520 Q711		+Brusett Franklin U28		#+TC Franklin 619 Brusett 520 J006 MAR Midland Empire 5017 Brusett 520 527		205 WT 730 RATIO 103 365 WT 1164
				DAM WR RATIO 4-105 96		

CED	BEPD	WEPD	YEPD	MILK	CW	MARB	RE
+11	-1.2	+49	+82	+23	+23	+63	+20
		Adj. IMF	Ratio	Adj. RE	Ratio	Adj. Rib Fat	Ratio
		4.46	122	12.4	91	.29	107

S Packer 2439, the herd bull we purchased from Spickler Ranch in 2014, has had a positive influence on our program. The bulls are nicely muscled and sound moving, while the females are super fronted with lots of volume and added capacity. A sure fire calving ease bull from a great cow with an exceptional udder. Dam's NR 4/105. Suitable for heifers.

40 WL Confidence 596

Birth Date: 3-21-2015 Bull 18355114 Tattoo: 596

Connealy Tobin Connealy Confidence 0100 16761479 Becka Gala of Conanga 8281		#Bon View New Design 208 Della of Conanga 667 #Connealy Thunder [RDF] Becka Lee of Conanga 37		BW 80
WL 5682 Eleanor 934-101 17026379 WL 0035 Eleanor 582-934		#+SAV Bismarck 5682 [RDF] #+GAR Grid Maker SAV Abigale 0451 #SAV Final Answer 0035 [RDF] WL 2385 Eleanor 751-582		205 WT 698 RATIO 98 365 WT 1197
		DAM WR RATIO 3-97 99		

CED	BEPD	WEPD	YEPD	MILK	CW	MARB	RE
+16	-1.6	+50	+92	+19	+17	+31	+1.03
		Adj. IMF	Ratio	Adj. RE	Ratio	Adj. Rib Fat	Ratio
		2.85	78	14.3	104	.22	81

Another calving ease Confidence son, 596 is out of a great uddered Bismarck daughter that does a great job year after year. Suitable for heifers.

41 WL Confidence 598 [OHP]

Birth Date: 3-22-2015 Bull 18353834 Tattoo: 598

Connealy Confidence 0100 WL Confidence 392 17636575 WL 0035 Fancy Beauty 435-953		Connealy Tobin Becka Gala of Conanga 8281 #SAV Final Answer 0035 [RDF] WL 5321 Fancy Beauty 231-435		BW 80
WL FP Fancy Rae W901-213 17351597 Nelsons Fancy Rae W901		#Connealy Final Product Connealy Product 568 #Ebonista of Conanga 471 #HARB Pendleton 765 JH #Nelsons Fancy Rae T702		205 WT 704 RATIO 99 365 WT 1222
		DAM WR RATIO 2-100 101		

CED	BEPD	WEPD	YEPD	MILK	CW	MARB	RE
+9	+3	+56	+100	+22	+34	+44	+1.06
		Adj. IMF	Ratio	Adj. RE	Ratio	Adj. Rib Fat	Ratio
		2.89	79	15.5	113	.34	126

A super profiled WL Confidence 392 son that is packed with muscle and natural thickness. When viewed from behind this bull is extremely wide based and full of muscle expression. He is also suitable for heifers. Suitable for heifers.

42 WL Final Answer 539

Birth Date: 3-12-2015 Bull 18354862 Tattoo: 539

SAV Final Answer 0035 [RDF] #13592905 SAV Emulous 8145		#Sitz Traveler 8180 #GDAR Traveler 71 Sitz Everelda Entense 1137 #Bon View Bando 598 SAV Sky Emulous 2124		BW 79
Berbos Pride 4134 #+14944130 SAV Pride 8250		#BCC Bushwacker 41-93 #Paramont Ambush 2172 RC Anita T Bando 918903 #Sitz Traveler 8180 SAV Pride 5022		205 WT 685 RATIO 97 365 WT 1176
		DAM WR RATIO 10-99 97		

CED	BEPD	WEPD	YEPD	MILK	CW	MARB	RE
+8	+6	+51	+86	+21	+20	+43	+60
		Adj. IMF	Ratio	Adj. RE	Ratio	Adj. Rib Fat	Ratio
		3.58	98	13.8	101	.25	93

Sired by Final Answer and out of a Bushwacker cow that has never taken a day off. Dam's NR 10/99, 4134 always does a great job with her calves. Still sound and great uddered, she is not close to done. Suitable for heifers.

43 WL Objective 5183

Birth Date: 4-21-2015 Bull 18353830 Tattoo: 5183

Mohnen Objective 1220 16760021 +Mohnen Erianna 2576		#SS Objective T510 0T26 SS Miss Rita R011 7R8 #+Leachman Right Time Mohnen Erianna 129		BW 78
WL 802 Fancy Beauty 7104-085 16711953 WL IF Fancy Beauty 237-7104		DR Bismarck 802 #+SAV Bismarck 5682 [RDF] DR Erica 657 #Mytty In Focus [RDF] LBK Fancy Beauty 2K37		205 WT 729 RATIO 103 365 WT 1169
		DAM WR RATIO 4-104 100		

CED	BEPD	WEPD	YEPD	MILK	CW	MARB	RE
+9	+6	+57	+94	+26	+29	+25	+25
		Adj. IMF	Ratio	Adj. RE	Ratio	Adj. Rib Fat	Ratio
		2.90	79	12.7	93	.21	78

A larger framed bull that will add size and scale without sacrificing mass and muscle. Suitable for heifers.

44 WL Final Answer 536

Birth Date: 3-11-2015 Bull 18353836 Tattoo: 536

WL Final Answer 071 +16711996 Meadow Mist 036-190-206		#SAV Final Answer 0035 [RDF] #Sitz Traveler 8180 SAV Emulous 8145 #B/R New Design 036 Meadow Mist 754M 103 190		BW 76
WL 4200 Elluna 547-951 16515135 WL 3133 Elluna 311H-547		#SAV Net Worth 4200 #SAV 8180 Traveler 004 [RDF] +SAV May 2410 MC Cumber 8113 Equator 3133 #+Elluna 311 of Gurr Lake		205 WT 671 RATIO 95 365 WT 1146
		DAM WR RATIO 5-100 95		

CED	BEPD	WEPD	YEPD	MILK	CW	MARB	RE
+10	+1	+46	+80	+28	+21	+55	+35
		Adj. IMF	Ratio	Adj. RE	Ratio	Adj. Rib Fat	Ratio
		4.03	110	13.1	96	.35	130

A nicely put together bull with lots of width over his top and down through his quarter. A son of our Final Answer herd sire, out of the Pennsylvania, Meadow Mist donor dam. Suitable for heifers.

WENDEL LIVESTOCK ANGUS BULLS

52 WL Final Answer 552

Birth Date: 3-13-2015 Bull 18353837 Tattoo: 552

#SAV Final Answer 0035 [RDF]	#Sitz Traveler 8180	BW
WL Final Answer 071	SAV Emulous 8145	80
+16711996 Meadow Mist 036-190-206	#B/R New Design 036	205 WT
	Meadow Mist 754M 103 190	675
		RATIO
		95
S Expedition 788	#R&S Expedition 1404 [RDF]	365 WT
WL 788 Ms Queedy 423-9114	#S Rosemary 247	1109
16514028 WL 878 Ms Queedy 234-423	#Bon View New Design 878	DAM WR RATIO
	LBK Ms Queedy 2K34	5-91 91

CED	BEPD	WEPD	YEPD	MILK	CW	MARB	RE
+10	+.4	+46	+77	+25	+16	+.35	+13
Adj. IMF	Ratio	Adj. RE	Ratio	Adj. Rib Fat	Ratio		
2.97	81	11.2	82	.21	78		

Take a look at this calving ease specialist. He has a great disposition and is easy to work with. Suitable for heifers.



Connealy Mentor 7374 - Sire of Lots 9, 35, 55 and 86.

55 WL Mentor 5104

Birth Date: 3-22-2015 Bull 18354870 Tattoo: 5104

#GAR Retail Product	#GAR Precision 1680	BW
Connealy Mentor 7374	+GAR Ext 4927	76
#15832714 #Executa of Conanga 939	#Jauer 353 Traveler 589 27	205 WT
	#Exec of Conanga 6940	715
		RATIO
		101
DR Bismarck 802	#+SAV Bismarck 5682 [RDF]	365 WT
WL 802 Melisande 207M-2113	DR Erica 657	1165
17351591 #RIV Lady Melisande 207M	#Schurrtop Supreme	DAM WR RATIO
	Bushs 1483 Lady 417	2-94 96

CED	BEPD	WEPD	YEPD	MILK	CW	MARB	RE
+6	+1.1	+55	+95	+20	+28	+.32	+59
Adj. IMF	Ratio	Adj. RE	Ratio	Adj. Rib Fat	Ratio		
3.78	103	12.7	93	.32	119		

A Select Sires, Mentor son that offers a low birth weight along with his Bismarck 802 dam's sire. A nicely balanced, great disposition heifer bull. Suitable for heifers.



AAR Ten X 7008 SA - Sire of Lots 5, 18, 19, 48, 53, 59 and 79.

53 WL Ten X 576

Birth Date: 3-18-2015 Bull 18356656 Tattoo: 576

#Mytty In Focus [RDF]	#SAF Focus of ER	BW
AAR Ten X 7008 SA	Mytty Countess 906	82
#15719841 #AAR Lady Kelton 5551	SAV Adaptor 2213	205 WT
	+HSAF Lady Kelton 504B	667
		RATIO
		94
#G 13 Structure	#TC Stockman 365	365 WT
WL G13 Ms Queedy 234-636	#G 13 Traveler 9428	1112
15511052 LBK Ms Queedy 2K34	+Hoff Stocker SC 927 3077	DAM WR RATIO
	#LBK MS Queedy 09K4 [RDF]	8-96 92

CED	BEPD	WEPD	YEPD	MILK	CW	MARB	RE
+9	+.3	+45	+82	+22	+37	+1.08	+40
Adj. IMF	Ratio	Adj. RE	Ratio	Adj. Rib Fat	Ratio		
5.49	150	12.6	92	.28	104		

A Ten X son with lots of eye appeal and gentle as a kitten. A great Marbling +1.08 EPD. Suitable for heifers.

56 WL Final Product 545

Birth Date: 3-13-2015 Bull 18358230 Tattoo: 545

Connealy Product 568	#GAR Retail Product	BW
Connealy Final Product	Pride Fine of Conanga 566	81
#15848422 #Ebonista of Conanga 471	#Connealy Deep Canyon 454	205 WT
	Ebonisa of Conanga 5469	691
		RATIO
		97
+BC Rocket 44	#BC Matrix 4132	365 WT
WL 44 Ms Queedy 640-967	Gibbet Hill Mignonne E37	1209
16515048 WL G13 Ms Queedy 387-640	#G 13 Structure	DAM WR RATIO
	LBK Miss Queedy 3K87	5-96 100

CED	BEPD	WEPD	YEPD	MILK	CW	MARB	RE
+4	+1.3	+52	+94	+21	+33	+.29	+91
Adj. IMF	Ratio	Adj. RE	Ratio	Adj. Rib Fat	Ratio		
3.39	92	16.3	119	.31	115		

A Final Product son that offers extra length that is very complete in his design and pattern.

54 WL War Party 5139

Birth Date: 3-28-2015 Bull 18353828 Tattoo: 5139

#+Werner War Party 2417	#Connealy Onward	BW
WL War Party 127	+BAAR USA Lady Jaye 489	80
17032488 WL 0035 Fancy Beauty 435-953	#SAV Final Answer 0035 [RDF]	205 WT
	WL 5321 Fancy Beauty 231-435	736
		RATIO
		104
+WL Final Answer 071	#SAV Final Answer 0035 [RDF]	365 WT
WL 071 Miss Queedy 595-386	Meadow Mist 036-190-206	1258
+17808129 #WL 2385 Miss Queedy 206-595	+NER Ambush 2385	DAM WR RATIO
	LBK Miss Queedy 2K06	1-104 104

CED	BEPD	WEPD	YEPD	MILK	CW	MARB	RE
+6	+1.2	+56	+101	+29	+34	+.42	+60
Adj. IMF	Ratio	Adj. RE	Ratio	Adj. Rib Fat	Ratio		
4.08	111	13.0	95	.20	74		

War Party 127 son that weighed in nicely at weaning, WR 104. 5139's sire 127, is out of the dam of Lots 3, 11, 20, 21, 28. Suitable for heifers.

57 WL Objective 5157

Birth Date: 4-8-2015 Bull 18353829 Tattoo: 5157

#SS Objective T510 0T26	#SS Traveler 6807 T510	BW
Mohnen Objective 1220	SS Miss Rita R011 7R8	80
16760021 +Mohnen Erianna 2576	#+Leachman Right Time	205 WT
	Mohnen Erianna 129	735
		RATIO
		104
#+Leachman Right Time	#N Bar Emulation EXT	365 WT
WL RT Forever Lady 132K-999	Leachman Erica 0025	1236
#+16443024 +SVF Forever Lady 132K	#+SVF Gdar 216 LTD	DAM WR RATIO
	+SVF Forever Lady 1121	5-104 102

CED	BEPD	WEPD	YEPD	MILK	CW	MARB	RE
+8	+.9	+53	+89	+24	+36	+.33	+36
Adj. IMF	Ratio	Adj. RE	Ratio	Adj. Rib Fat	Ratio		
3.92	107	14.8	108	.27	100		

A son of Mohnen Objective 1220 and out of a very productive Right Time cow. A larger-framed bull with added pounds and mass. WR 104, dam's NR 5/104. Suitable for heifers.

WENDEL LIVESTOCK ANGUS HEIFERS

58 WL K360 Rosetta 655-5132

Birth Date: 3-27-2015 Cow 18269438 Tattoo: 5132

#Sitz Upward 307R
Plattmeyer Weigh Up K360
16692552 #Barbara of Plattmeyer 337

#Connealy Onward
Sitz Henrietta Pride 81M
#GAR Retail Product
Barbara of Plattmeyer 311

BW	80
205 WT	662
RATIO	113
365 WT	1056
DAM WR	RATIO
7-101	108

WL Rainmaker 308
WL 308 Rosetta 305-655
15509057 Rosetta 305 of Gurr Lake

#Basin Rainmaker 814Z
Molitor Lady Polly 623-198
+Mc Cumber Powertrain HC 1025
#Rosetta 696 of Mc Cumber

CED	BE PD	WE PD	YE PD	MILK	CW	MARB	RE
+4	+1.4	+61	+107	+27	1+39	1+.45	1+.49

A Weigh Up daughter with loads of volume and body capacity. An extremely big, square hipped heifer that carries that width deep into her hindquarter. One of the top weaning ratio heifers in our entire group. 5132 does have some white on her belly but all behind her navel. A big powerful brood cow prospect.



WL K360 Rosetta 655-5132 - Lot 58

59 WL 7008 Ms Queedy 247-5119

Birth Date: 3-25-2015 Cow 18269349 Tattoo: 5119

#Mytty In Focus [RDF]
AAR Ten X 7008 SA
#15719841 #AAR Lady Kelton 5551

#SAF Focus of ER
Mytty Countess 906
SAV Adaptor 2213
+HSAF Lady Kelton 504B

BW	67
205 WT	579
RATIO	99
365 WT	958
DAM WR	RATIO
2-101	98

#Connealy Mentor 7374
WL 7374 Ms Queedy 636-247
17351628 WL G13 Ms Queedy 234-636

#GAR Retail Product
#Executa of Conanga 939
#G 13 Structure
LBK Ms Queedy 2K34

CED	BE PD	WE PD	YE PD	MILK	CW	MARB	RE
+12	-.9	+54	+100	+23	1+46	1+.89	1+.66

A moderate-framed Ten X daughter that is very well put together. She is long clean necked with added extension in her front one third.



WL 7008 Ms Queedy 247-5119 - Lot 59

60 WL 1014 Elluna 923-5123

Birth Date: 3-25-2015 Cow 18269491 Tattoo: 5123

#Kesslers Frontman R001
Boyd Signature 1014
16916267 Boyd Erica Dianna 9054

#Connealy Front Page 0228
Kesslers Bell 0024
Boyd Next Day 6010
+Boyd Erica Dianna 606

BW	80
205 WT	572
RATIO	98
365 WT	994
DAM WR	RATIO
5-96	102

#Mytty In Focus [RDF]
WL IF Elluna 704-923
16518293 WL 0035 Elluna 547-704

#SAF Focus of ER
Mytty Countess 906
#SAV Final Answer 0035 [RDF]
WL 3133 Elluna 311H-547

CED	BE PD	WE PD	YE PD	MILK	CW	MARB	RE
+5	+1.8	+60	+109	+28	1+32	1+.57	1+.60

A very complete made heifer that will catch your eye when in the pen. She is big middle with added capacity. 5123 is structurally well made and will be a positive addition to any herd.



WL 1014 Elluna 923-5123 - Lot 60

61 WL 213 Ava Lee 2146-537

Birth Date: 3-11-2015 Cow 18266315 Tattoo: 537

Sinclair Fortunate Son
Mc Cumber Fortunate 213
17265901 #+Miss Wix 5139 of Mc Cumber

Sinclair Emulate 7XT28
#Sinclair Blackbird 2P8 7079
#+BT Right Time 24J
+Miss Wix 7111 of Mc Cumber

BW	74
205 WT	582
RATIO	99
365 WT	1017
DAM WR	RATIO
2-95	104

DR Bismarck 802
WL 802 Ava Lee 883-2146
17351629 WL 420 Ava Lee 339-883

#+SAV Bismarck 5682 [RDF]
DR Erica 657
WL E161 Precision 420
BPR Ava Lee 339

CED	BE PD	WE PD	YE PD	MILK	CW	MARB	RE
+6	+1.0	+56	+103	+23	1+30	1+.33	1+.59

We had mostly Fortunate 213 females last year and she will be the first one we decided to part with. We have several 213 daughters that have now calved with mothering instincts being very natural. 213's bulls have been very good and we are very excited about the benefits of his females. 537 is a moderate-framed, power-packed heifer with superior maternal traits.



WL 213 Ava Lee 2146-537 - Lot 61

WENDEL LIVESTOCK ANGUS HEIFERS



WL 392 Toby Rosebud 364-524 - Lot 62



Connealy Final Product - Sire of Lots 16, 56 and 65.

62 WL 392 Toby Rosebud 364-524

Birth Date: 3-4-2015 Cow 18267168 Tattoo: 524

Connealy Confidence 0100		Connealy Tobin		BW	
WL Confidence 392		Becka Gala of Conanga 8281		72	
17636575	WL 0035 Fancy Beauty 435-953	#SAV Final Answer 0035 [RDF]		205 WT	
		WL 5321 Fancy Beauty 231-435		576	
				RATIO	
				98	
				365 WT	
				1011	
				DAM WR RATIO	
				1-98 103	

CED	BEPD	WEPD	YEPD	MILK	CW	MARB	RE
+8	+1.0	+51	+98	+19	N/A	N/A	N/A

A daughter of our WL Confidence 392 bull. A heifer with a tremendous amount of length that has great muscle expression. We are excited about the 392 daughters and look forward to calving them next spring. They are extremely sound and good footed.

63 WL 127 Eileen 138-5151

Birth Date: 4-3-2015 Cow 18266293 Tattoo: 5151

#+Werner War Party 2417		#Connealy Onward		BW	
WL War Party 127		+BAAR USA Lady Jaye 489		74	
17032488	WL 0035 Fancy Beauty 435-953	#SAV Final Answer 0035 [RDF]		205 WT	
		WL 5321 Fancy Beauty 231-435		574	
				RATIO	
				98	
				365 WT	
				968	
				DAM WR RATIO	
				3-103 99	

CED	BEPD	WEPD	YEPD	MILK	CW	MARB	RE
+8	+0	+48	+91	+26	I+29	I+.49	I+.85

A daughter of our War Party 127, this heifer will make a great cow. The 127 daughters we have in our herd are angular bodied, feminine fronted, sound footed and great uddered females.

64 WL 0100 Blackbird 2108-5142

Birth Date: 3-30-2015 Cow 18269479 Tattoo: 5142

Connealy Tobin		#Bon View New Design 208		BW	
Connealy Confidence 0100		Della of Conanga 667		75	
16761479	Becka Gala of Conanga 8281	#Connealy Thunder [RDF]		205 WT	
		Becka Lee of Conanga 37		568	
				RATIO	
				97	
				365 WT	
				962	
				DAM WR RATIO	
				2-105 99	

CED	BEPD	WEPD	YEPD	MILK	CW	MARB	RE
+11	+.5	+44	+83	+22	I+27	I+.35	I+.98

A nice clean fronted, long-bodied Confidence daughter. The Confidence females in our herd are doing an excellent job. They are sure footed, extremely sound, with superb udder quality. They are also easy keeping females that stay in good condition year round. 5142 is an excellent brood cow prospect.

65 WL FP Erica 563-549

Birth Date: 3-13-2015 Cow 18269375 Tattoo: 549

Connealy Product 568		#GAR Retail Product		BW	
Connealy Final Product		Pride Fine of Conanga 566		84	
#15848422	#Ebonista of Conanga 471	#Connealy Deep Canyon 454		205 WT	
		Ebonisa of Conanga 5469		563	
				RATIO	
				96	
				365 WT	
				942	
				DAM WR RATIO	
				9-98 96	

CED	BEPD	WEPD	YEPD	MILK	CW	MARB	RE
+2	+1.7	+47	+86	+23	I+25	I+.35	I+.52

A Final Product daughter that should make a great cow. We are very pleased with the Final Product daughters that we have in production. They are very strong numbered females that have great udders and are easy to work with.



WL 2439 Blackbird 203-5115 - Lot 66

66 WL 2439 Blackbird 203-5115

Birth Date: 3-24-2015 Cow 18266307 Tattoo: 5115

#Connealy Packer 547		#Feltons Meat Packer 62		BW	
S Packer 2439		Bestrelle of Conanga 539		68	
17449560	S Rita 8413	S Grid Maker 5131		205 WT	
		S Rita 4309		566	
				RATIO	
				96	
				365 WT	
				982	
				DAM WR RATIO	
				2-99 100	

CED	BEPD	WEPD	YEPD	MILK	CW	MARB	RE
+11	-1.1	+46	+88	+22	I+27	I+.69	I+.33

A daughter of the S Packer bull, 5115 is a well-balanced heifer that is angular bodied and has that great feminine look to her.

WENDEL LIVESTOCK ANGUS HEIFERS



WL 2439 Ms Queedy 875-5148 - Lot 67

69 WL 1220 Eleanor 582-564

Birth Date: 3-15-2015 Cow 18266289 Tattoo: 564

#SS Objective T510 OT26	#SS Traveler 6807 T510	BW
Mohnen Objective 1220	SS Miss Rita R011 7R8	86
16760021 +Mohnen Erianna 2576	#+Leachman Right Time	205 WT
	Mohnen Erianna 129	577
		RATIO
		98
+NER Ambush 2385	#Rockn D Ambush 1531	365 WT
WL 2385 Eleanor 751-582	+Ner Lucy 427-9084	966
15252844 #Molitor 2928 Eleanor 258-751	#Papa Equator 2928	DAM WR RATIO
	Molitor 44 Eleanor 0942	9-94 99

CED	BEPD	WEPD	YEPD	MILK	CW	MARB	RE
+2	+2.7	+49	+85	+19	I+30	I+.25	I+.20

A larger-framed heifer that is out of our tamest cow. She will be an easy going powerful heifer that will make an enjoyable, friendly cow.

67 WL 2439 Ms Queedy 875-5148

Birth Date: 3-31-2015 Cow 18266303 Tattoo: 5148

#Connealy Packer 547	#Feltons Meat Packer 62	BW
S Packer 2439	Bestrelle of Conanga 539	87
17449560 S Rita 8413	S Grid Maker 5131	205 WT
	S Rita 4309	591
		RATIO
		101
WL E161 Precision 420	#Twin Valley Precision E161 [RDF]	365 WT
WL 420 Ms Queedy 609-875	Molitor 043 Blkbd A 930-925	1058
16139444 WL LO Ms Queedy 211-609	#Connealy Lead On	DAM WR RATIO
	LBK Ms Queedy 2K11	6-96 108

CED	BEPD	WEPD	YEPD	MILK	CW	MARB	RE
+5	+1.2	+41	+87	+19	I+28	I+.49	I+.42

WR 101, another great S Packer daughter, I think the kids missed this heifer when they were picking out their 4-H show heifers. Unless they can scrape up enough egg money from their 15 laying hens, someone will take this very stylish fancy made heifer home.



WL 392 Eileen May 319-5102 - Lot 68

70 WL 1220 Eileen 948-5171

Birth Date: 4-12-2015 Cow 18266288 Tattoo: 5171

#SS Objective T510 OT26	#SS Traveler 6807 T510	BW
Mohnen Objective 1220	SS Miss Rita R011 7R8	68
16760021 +Mohnen Erianna 2576	#+Leachman Right Time	205 WT
	Mohnen Erianna 129	590
		RATIO
		100
#SAV Final Answer 0035 [RDF]	#Sitz Traveler 8180	365 WT
WL 0035 Eileen 515-948	SAV Emulous 8145	988
16514901 #Molitor 411 Eileen G12-515	LD Traveling Hank 411	DAM WR RATIO
	SAF G12 of E56 Dividend	5-99 101

CED	BEPD	WEPD	YEPD	MILK	CW	MARB	RE
+12	-1.7	+54	+90	+24	I+23	I+.39	I+.40

A daughter of our 1220 Objective bull, she is a big power, high growth female that will add extra pounds and performance to her calves.



Mytty In Focus - Sire of Lots 15 and 71.

68 WL 392 Eileen May 319-5103

Birth Date: 3-22-2015 Cow 18266318 Tattoo: 5103

Connealy Confidence 0100	Connealy Tobin	BW
WL Confidence 392	Becka Gala of Conanga 8281	70
17636575 WL 0035 Fancy Beauty 435-953	#SAV Final Answer 0035 [RDF]	205 WT
	WL 5321 Fancy Beauty 231-435	577
		RATIO
		98
#Connealy Consensus 7229	Connealy Consensus	365 WT
WL 7229 Eileen May 801-319	Blue Lilly of Conanga 16	937
17633015 WL 0035 Dividend 641-801	#SAV Final Answer 0035 [RDF]	DAM WR RATIO
	WL 095 Dividend G12-641	1-98 96

CED	BEPD	WEPD	YEPD	MILK	CW	MARB	RE
+9	+6	+52	+90	+21	N/A	N/A	N/A

Another typical long-bodied, big-topped 392 daughter. The 392's should make excellent cows with good tight udders and small teats.

71 WL IF Ms Queedy 745-566

Birth Date: 3-15-2015 Cow 18269229 Tattoo: 566

#SAF Focus of ER	#SAF Fame	BW
Mytty In Focus [RDF]	GDAR Forever Lady 246	74
#13880818 Mytty Countess 906	#Sitz Alliance 6595	205 WT
	Baldrige Countess 357	527
		RATIO
		90
#Boyd On Target 1083	#+SAF 598 Bando 5175	365 WT
WL 1083 Ms Queedy 234-745	+Boyd Forever Lady 7095	892
15901967 LBK Ms Queedy 2K34	+Hoff Stocker SC 927 3077	DAM WR RATIO
	#LBK MS Queedy 09K4 [RDF]	6-92 91

CED	BEPD	WEPD	YEPD	MILK	CW	MARB	RE
+9	-2	+42	+79	+19	I+29	I+.75	I+.09

An In Focus daughter that is gentle mannered and loaded with volume and depth of body. 566 has productivity bred in from top to bottom.

WENDEL LIVESTOCK ANGUS HEIFERS

72 WL 2439 Ms Blackcap 957-5180

Birth Date: 4-17-2015		Cow 18266301		Tattoo: 5180			
#Connealy Packer 547		#Feltons Meat Packer 62		BW			
S Packer 2439		Bestrelle of Conanga 539		64			
17449560 S Rita 8413		S Grid Maker 5131		205 WT			
		S Rita 4309		558			
				RATIO			
				95			
S Expedition 788		#R&S Expedition 1404 [RDF]		365 WT			
WL 788 Ms Blackcap 661-957		#S Rosemary 247		947			
16449245 WL 1i2 Ms Blackcap 3K19-661		#+Rito 1i2 of 2536 Rito 616		DAM WR			
		LBK Ms Blackcap 3K19		RATIO			
				5-101			
				97			
CED	BEPD	WEPD	YEPD	MILK	CW	MARB	RE
+12	-1.7	+47	+89	+21	I+35	I+.57	I+.47

Another feminine made S Packer 2439 daughter out of a highly productive cow with a NR 5/101.

73 WL 1220 Erica 2114-5144

Birth Date: 3-30-2015		Cow 18266311		Tattoo: 5144			
#SS Objective T510 0T26		#SS Traveler 6807 T510		BW			
Mohnen Objective 1220		SS Miss Rita R011 7R8		75			
16760021 +Mohnen Erianna 2576		#+Leachman Right Time		205 WT			
		Mohnen Erianna 129		535			
				RATIO			
				91			
DR Bismarck 802		#+SAV Bismarck 5682 [RDF]		365 WT			
WL 802 Erica 848-2114		DR Erica 657		970			
17351606 WL 587 Erica 515-848		#Connealy Thunder [RDF]		DAM WR			
		Molitor Erica 763-563		RATIO			
				2-93			
				99			
CED	BEPD	WEPD	YEPD	MILK	CW	MARB	RE
+8	+1.1	+52	+94	+22	I+31	I+.25	I+.40

A daughter of the Mohnen Objective 1220 bull. She has plenty of size and scale with added performance and growth ability.

74 WL 2439 Blackbird 094-5166

Birth Date: 4-11-2015		Cow 18266300		Tattoo: 5166			
#Connealy Packer 547		#Feltons Meat Packer 62		BW			
S Packer 2439		Bestrelle of Conanga 539		64			
17449560 S Rita 8413		S Grid Maker 5131		205 WT			
		S Rita 4309		531			
				RATIO			
				90			
+SAV Bandoier 1916		SVF Bandoier		365 WT			
WL 1916 Blackbird 925-094		+Boyd Forever Lady 7122		920			
+16715727 Molitor 043 Blkbd A 930-925		#+Sitz Traveler 043		DAM WR			
		Molitor Clara Blackbird 8239		RATIO			
				4-96			
				94			
CED	BEPD	WEPD	YEPD	MILK	CW	MARB	RE
+12	-1.6	+39	+75	+23	I+25	I+.48	I+.32

Sired by S Packer 2439, this heifer is very attractive from her side profile and is easy to find in the herd. She is out of a very productive family tracing back to our Molitor 925 donor dam.

75 WL 2439 Rosebud 265-5154

Birth Date: 4-3-2015		Cow 18266316		Tattoo: 5154			
#Connealy Packer 547		#Feltons Meat Packer 62		BW			
S Packer 2439		Bestrelle of Conanga 539		71			
17449560 S Rita 8413		S Grid Maker 5131		205 WT			
		S Rita 4309		533			
				RATIO			
				91			
#Connealy Final Product		Connealy Product 568		365 WT			
WL FP Rosebud 529-265		#Ebonista of Conanga 471		903			
+17367779 #WL GM Toby Rosebud L2-529		#+GAR Grid Maker		DAM WR			
		Ahlgrens Toby Rosebud 4335		RATIO			
				2-91			
				92			
CED	BEPD	WEPD	YEPD	MILK	CW	MARB	RE
+7	-3	+45	+87	+18	N/A	N/A	N/A

This S Packer 2439 daughter is a very moderate-framed, thick made heifer that is a product of a Final Product dam that goes back to our Grid Maker 529 donor dam.

76 WL 392 Zara 849-565

Birth Date: 3-15-2015		Cow 18266306		Tattoo: 565			
Connealy Confidence 0100		Connealy Tobin		BW			
WL Confidence 392		Becka Gala of Conanga 8281		82			
17636575 WL 0035 Fancy Beauty 435-953		#SAV Final Answer 0035 [RDF]		205 WT			
		WL 5321 Fancy Beauty 231-435		507			
				RATIO			
				86			
#Baldridge Kaboom K243 KCF		#Jauer 353 Traveler 589 27		365 WT			
WL Kaboom Zara 577-849		Pleasantia of Conanga 736		886			
+16139435 Mohnen Zara 577		#Bon View Emulation Ext 473		DAM WR			
		Mohnen Zara 15		RATIO			
				6-91			
				90			
CED	BEPD	WEPD	YEPD	MILK	CW	MARB	RE
+6	+1.5	+44	+85	+14	I+35	I+.37	I+.91

A WL Confidence 392 daughter that traces back to the great Mohnen Zara 577 donor dam.

77 WL 127 Sky Polly 3160-5185

Birth Date: 4-21-2015		Cow 18419736		Tattoo: 5185			
#+Werner War Party 2417		#Connealy Onward		BW			
WL War Party 127		+BAAR USA Lady Jaye 489		68			
17032488 WL 0035 Fancy Beauty 435-953		#SAV Final Answer 0035 [RDF]		205 WT			
		WL 5321 Fancy Beauty 231-435		641			
				RATIO			
				107			
LaGrand Upward 0007		#Sitz Upward 307R		365 WT			
WL 0007 Sky Polly 828-3160		LaGrand Wendy 8237		1014			
17633044 WL IF Sky Polly 309-828		#Mytty In Focus [RDF]		DAM WR			
		WL 1407 SKY Polly 514-309		RATIO			
				1-107			
				N/A			
CED	BEPD	WEPD	YEPD	MILK	CW	MARB	RE
+10	+0	+53	+96	+28	100	N/A	N/A

A daughter of our tried and proven WL War Party 127 bull, I am looking for the 127 daughters' influence to push our cow herd forward and make a positive impact on the breed.



WITH THE AMAFERM® ADVANTAGE

“We have used VitaFerm for many years. It has helped our seedstock reach its genetic potential in feed conversion and fertility.”

- Mike Wendel

WENDEL LIVESTOCK ANGUS HEIFERS

- | | | | | | |
|----|---|---------------------|-----|-----------------------------------|--------------------------|
| 78 | Heifer 528 | DOB: 3/9/15 | 88 | Heifer 5201 | DOB: 3/31-5/5/15 |
| | Sire: 028, Dam: 828
WW 527, Dam NR 6@97 | | | Sire: WL Chisum 140/WL Chisum 190 | |
| 79 | Heifer 503 | DOB: 2/10/15 | 89 | Heifer 5202 | DOB: 3/31-5/5/15 |
| | Sire: 7008, Dam: 314
WW 537, Dam NR 1@91 | | | Sire: WL Chisum 140/WL Chisum 190 | |
| 80 | Heifer 5117 | DOB: 3/24/15 | 90 | Heifer 5203 | DOB: 3/31-5/5/15 |
| | Sire: 1014, Dam: 651S
WW 555, Dam NR 6@99 | | | Sire: WL Chisum 140/WL Chisum 190 | |
| 81 | Heifer 5173 | DOB: 4/13/15 | 91 | Heifer 5204 | DOB: 3/31-5/5/15 |
| | Sire: 2439, Dam: 883
WW 539, Dam NR 6@98 | | | Sire: WL Chisum 140/WL Chisum 190 | |
| 82 | Heifer 5176 | DOB: 4/16/15 | 92 | Heifer 5205 | DOB: 3/31-5/5/15 |
| | Sire: 2439, Dam: 7106
WW 542, Dam NR 5@106 | | | Sire: WL Chisum 140/WL Chisum 190 | |
| 83 | Heifer 5190 | DOB: 5/11/15 | 93 | Heifer 5206 | DOB: 3/31-5/5/15 |
| | Sire: 2439, Dam: 1665
WW 562, Dam NR 8@103 | | | Sire: WL Chisum 140/WL Chisum 190 | |
| 84 | Heifer 5162 | DOB: 4/10/15 | 94 | Heifer 5207 | DOB: 3/31-5/5/15 |
| | Sire: 2439, Dam: 206
WW 480, Dam NR 2@92 | | | Sire: WL Chisum 140/WL Chisum 190 | |
| 85 | Heifer 5172 | DOB: 4/13/15 | 95 | Heifer 5208 | DOB: 3/31-5/5/15 |
| | Sire: 1220, Dam: 848
WW 498, Dam NR 6@96 | | | Sire: WL Chisum 140/WL Chisum 190 | |
| 86 | Heifer 526 | DOB: 3/8/15 | 96 | Heifer 5209 | DOB: 3/31-5/5/15 |
| | Sire: 7374, Dam: 6022
WW 495, Dam NR 6@100 | | | Sire: WL Chisum 140/WL Chisum 190 | |
| 87 | Heifer 5193 | DOB: | 97 | Heifer 5210 | DOB: 3/31-5/5/15 |
| | Sire: 1220, Dam: Y144 | | | Sire: WL Chisum 140/WL Chisum 190 | |
| | | | 98 | Heifer 5211 | DOB: 3/31-5/5/15 |
| | | | | Sire: WL Chisum 140/WL Chisum 190 | |
| | | | 99 | Heifer 5212 | DOB: 3/31-5/5/15 |
| | | | | Sire: WL Chisum 140/WL Chisum 190 | |
| | | | 100 | Heifer 5213 | DOB: 3/31-5/5/15 |
| | | | | Sire: WL Chisum 140/WL Chisum 190 | |
| | | | 101 | Heifer 5214 | DOB: 3/31-5/5/15 |
| | | | | Sire: WL Chisum 140/WL Chisum 190 | |
| | | | 102 | Heifer 5215 | DOB: 3/31-5/5/15 |
| | | | | Sire: WL Chisum 140/WL Chisum 190 | |
| | | | 103 | Heifer 5216 | DOB: 3/31-5/5/15 |
| | | | | Sire: WL Chisum 140/WL Chisum 190 | |
| | | | 104 | Heifer 5217 | DOB: 3/31-5/5/15 |
| | | | | Sire: WL Chisum 140/WL Chisum 190 | |
| | | | 105 | Heifer 5218 | DOB: 3/31-5/5/15 |
| | | | | Sire: WL Chisum 140/WL Chisum 190 | |
| | | | 106 | Heifer 5219 | DOB: 3/31-5/5/15 |
| | | | | Sire: WL Chisum 140/WL Chisum 190 | |
| | | | 107 | Heifer L228 | DOB: 3/25-5/10/15 |
| | | | | Sire: WL Confidence 330 | |
| | | | 108 | Heifer 2138 | DOB: 3/25-5/10/15 |
| | | | | Sire: WL New Day 293 | |
| | | | 109 | Heifer 947 | DOB: 3/25-5/10/15 |
| | | | | Sire: WL Confidence 330 | |
| | | | 110 | Heifer 3142 | DOB: 3/25-5/10/15 |
| | | | | Sire: WL Confidence 330 | |

Reference Sires

A

Connealy Courage 25L [DDF]

Birth Date: 2-6-2012 Bull #17302304 Tattoo: 25L

Connealy Tobin #Bon View New Design 208
 Connealy Confidence 0100 Delia of Conanga 667
 16761479 Becka Gala of Conanga 8281 #Connealy Thunder [RDF]
 Becka Lee of Conanga 37

#Vermilion Dateline 7078 #Connealy Dateline
 Pearl Pammy of Conanga 194 #Vermilion Blackbird 5044
 14528835 Pearl Jam of Conanga 6114 #+Stevenson Royce 741C
 Prides Stacker Conanga 6226

CED	BEPD	WEPD	YEPD	MILK	CW	MARB	RE
+16	-6	+58	+95	+18	+19	+3.0	+1.06

F

SAV Final Answer 0035 [AMF-CAF-D2F-DDF-M1F-NHF-OHF-RDF]

Birth Date: 2-22-2000 Bull #13592905 Tattoo: 0035

#GDAR Traveler 71 #Traveler 1148 GDAR
 Sitz Traveler 8180 GDAR Miss Blackcap 567
 #11367940 Sitz Everelda Entense 1137 #GDAR Rainmaker 340
 Sitz Everelda Entense 2335

#Bon View Bando 598 #Tehama Bando 155
 SAV Emulous 8145 #Bon View Dora 56
 13094078 SAV Sky Emulous 2124 #+Ellanin Sky Diver
 Tail N 0383

CED	BEPD	WEPD	YEPD	MILK	CW	MARB	RE
+12	-1.3	+59	+100	+22	+14	+6.3	+69

B

Connealy Capitalist 028 [DDF]

Birth Date: 1-11-2010 Bull 16752262 Tattoo: 028

#Sitz Traveler 8180 #GDAR Traveler 71
 SAV Final Answer 0035 [RDF] Sitz Everelda Entense 1137
 #13592905 SAV Emulous 8145 #Bon View Bando 598
 SAV Sky Emulous 2124

#CRA Bextor 872 5205 608 #BAR Ext Traveler 205
 Prides Pita of Conanga 8821 Cra Lady Jaye 608 498 S Easy
 16204878 Prides Trav of Conanga 6499 Traveler of Conanga
 #Pretty Pet of Conanga

CED	BEPD	WEPD	YEPD	MILK	CW	MARB	RE
+10	-2	+63	+107	+15	+28	+5.5	+1.04

G

Connealy Mentor 7374 [AMF-CAF-DDF-NHF]

Birth Date: 1-31-2007 Bull #15832714 Tattoo: 7374

#GAR Precision 1680 #Tehama Bando 155
 GAR Retail Product 9J9 GAR 856
 #13395329 +GAR Ext 4927 #N Bar Emulation EXT
 GAR Traveler 641

#Jauer 353 Traveler 589 27 Jauer 7111 Traveler 353 719
 Executa of Conanga 939 Jauer 6807 Traveler 27 085
 #14584130 #Exec of Conanga 6940 #VF Venture Forward
 Connealy Max 940

CED	BEPD	WEPD	YEPD	MILK	CW	MARB	RE
+4	+1.3	+54	+103	+19	+40	+4.2	+1.01

C

Connealy Confidence 0100 [CAF-DDF-OHF]

Birth Date: 1-16-2010 Bull 16761479 Tattoo: 0100

#Bon View New Design 208 #B/R New Design 036
 Connealy Tobin #Bon View Erica 443
 15497354 Delia of Conanga 667 #CA Future Direction 5321
 #Deena of Conanga 668

#Connealy Thunder [RDF] #Baldrige Kaboom K243 KCF
 Becka Gala of Conanga 8281 #Parka of Conanga 241
 16204725 Becka Lee of Conanga 37 #CRA Bextor 872 5205 608
 #Beckys Lia of Conanga 81

CED	BEPD	WEPD	YEPD	MILK	CW	MARB	RE
+20	-3.2	+47	+88	+17	+22	+3.1	+1.19

H

WL Confidence 392

Birth Date: 3-24-2013 Bull 17636575 Tattoo: 392

Connealy Tobin #Bon View New Design 208
 Connealy Confidence 0100 Delia of Conanga 667
 16761479 Becka Gala of Conanga 8281 #Connealy Thunder [RDF]
 Becka Lee of Conanga 37

#SAV Final Answer 0035 [RDF] #Sitz Traveler 8180
 WL 0035 Fancy Beauty 435-953 SAV Emulous 8145
 16594892 WL 5321 Fancy Beauty 231-435 #CA Future Direction 5321
 LBK Fancy Beauty 2K31

CED	BEPD	WEPD	YEPD	MILK	CW	MARB	RE
+10	+5	+56	+100	+18	+32	+5.4	+1.29

D

AAR Ten X 7008 SA [AMF-CAF-D2F-DDF-M1F-NHF-OHF]

Birth Date: 2-9-2007 Bull #15719841 Tattoo: 7008

#SAF Focus of ER #SAF Fame
 Mytty In Focus [RDF] GDAR Forever Lady 246
 #13880818 Mytty Countess 906 #Sitz Alliance 6595
 Baldrige Countess 357

SAV Adaptor 2213 #BCC Bushwacker 41-93
 AAR Lady Kelton 5551 SAV Abigale 0451
 #15151449 +HSAF Lady Kelton 504B #Sitz Traveler 8180
 NA Lady Constance 504

CED	BEPD	WEPD	YEPD	MILK	CW	MARB	RE
+8	+2	+66	+129	+26	+64	+1.33	+82

I

Mohnen Objective 1220

Birth Date: 1-17-2010 Bull 16760021 Tattoo: 1220

#SS Traveler 6807 T510 #DHD Traveler 6807
 SS Objective T510 0T26 #SS Miss Hi Spade A114
 #13776378 SS Miss Rita R011 7R8 SS Rito Rito R76 R011
 SS Miss Ultress U56

#+Leachman Right Time #N Bar Emulation EXT
 Mohnen Erianna 2576 Leachman Erica 0025
 +16110631 Mohnen Erianna 129 #Bon View Bando 598
 Mohnen Erianna 97

CED	BEPD	WEPD	YEPD	MILK	CW	MARB	RE
+9	+1.2	+59	+93	+26	+35	+2.1	+27

E

Mc Cumber Fortunate 213

Birth Date: 1-19-2012 Bull 17265901 Tattoo: 213

Sinclair Emulate 7XT28 #Sinclair Extra 4X13
 Sinclair Fortunate Son +Sinclair Blackbird 20F3 6417
 16648841 #Sinclair Blackbird 2P8 7079 #N Bar Prime Time D806
 +Rito 707 of Ideal 089 7076

#+BT Right Time 24J #+Leachman Right Time
 Miss Wix 5139 of Mc Cumber Sitz Everelda Entense 1905
 #+15050824 +Miss Wix 7111 of Mc Cumber #GDAR Traveler 71
 #Miss Wix 365 of Mc Cumber

CED	BEPD	WEPD	YEPD	MILK	CW	MARB	RE
+6	+1.2	+57	+108	+27	+33	+3.7	+63

J

Myyty In Focus [AMF-CAF-D2F-DDF-M1F-NHF-OHF-RDF]

Birth Date: 2-18-2001 Bull #13880818 Tattoo: 109

#SAF Fame #Minerts Fortune 2000
 SAF Focus of ER #+SAF Royal Lass 1027
 #12618076 GDAR Forever Lady 246 #Transformer 100 EAR
 +GDAR Forever Lady 718

#Sitz Alliance 6595 #Sitz Traveler 8180
 Mytty Countess 906 #Sitz Barbaramere Jet 2698
 13457755 Baldrige Countess 357 #Bon View Emulation Ext 473
 Baldrige Countess 235

CED	BEPD	WEPD	YEPD	MILK	CW	MARB	RE
+13	-1.6	+51	+92	+24	+30	+8.4	+05

Reference Sires

K

Connealy Final Product [AMF-CAF-D2F-DDF-M1F-NHF]

Birth Date: 1-23-2007 Bull #15848422 Tattoo: 7212

#GAR Retail Product
Connealy Product 568
15148584 Pride Fine of Conanga 566

#GAR Precision 1680
+GAR Ext 4927
#Bon View New Design 878
Pride Fan of Conanga 6456

#Connealy Deep Canyon 454
Ebonista of Conanga 471
#14220178 Ebonisa of Conanga 5469

#Larks Canyon 74D4
#Ronna of Conanga 64452
#Papa Universe 515
#Ebony Asy of Conanga

CED	BEPD	WEPD	YEPD	MILK	CW	MARB	RE
+3	+5	+62	+114	+27	+34	+4.3	+71

P

Connealy In Sure 8524 [AMF-CAF-D2F-DDF-M1F-NHF]

Birth Date: 2-7-2008 Bull 16205036 Tattoo: 8524

#SAF Focus of ER
Mytty In Focus (RDF)
#13880818 Mytty Countess 906

#SAF Fame
GDAR Forever Lady 246
#Sitz Alliance 6595
Baldrige Countess 357

#Connealy Onward
Entreena of Conanga 657
#15216323 Enty of Conanga 5657

#Connealy Lead On
Altune of Conanga 6104
#+GAR Expectation 4915
#Enlover of Conanga

CED	BEPD	WEPD	YEPD	MILK	CW	MARB	RE
+19	-2.6	+46	+85	+33	+42	+1.21	+86

L

WL Ten X 356

Birth Date: 3-17-2013 Bull 17636587 Tattoo: 356

#Myyty In Focus (RDF)
AAR Ten X 7008 SA
#15719841 #AAR Lady Kelton 5551

#SAF Focus of ER
Myyty Countess 906
SAV Adaptor 2213
+HSAF Lady Kelton 504B

#Sitz Upward 307R
WL 307R Zara 577-192
#17049659 Mohnen Zara 577

#Connealy Onward
Sitz Henrietta Pride 81M
#Bon View Emulation Ext 473
Mohnen Zara 15

CED	BEPD	WEPD	YEPD	MILK	CW	MARB	RE
+3	+1.4	+61	+111	+25	+63	+1.16	+85

Q

Sitz Upward 307R [AMF-CAF-D2F-DDF-M1F-NHF]

Birth Date: 3-12-2005 Bull #14963730 Tattoo: 307R

#Connealy Lead On
Connealy Onward
#14216491 Altune of Conanga 6104

#Connealy Leadtime
Eligence Plus of Conanga
#GAR Traveler 1489
Avalon 1418 of Conanga 6276

#Sitz Value 7097
Sitz Henrietta Pride 81M
#14087650 Sitz Henrietta Pride 1370

#Sitz Traveler 6802
#Sitz Eisa Evergreen 791
#+OCC Great Plains 943G
Sitz Henrietta Pride 2155

CED	BEPD	WEPD	YEPD	MILK	CW	MARB	RE
+5	+2.1	+68	+129	+35	+87	+6.65	+76

M

Boyd Signature 1014 [DDF]

Birth Date: 1-6-2011 Bull 16916267 Tattoo: 1014

#Connealy Front Page 0228
Kesslers Frontman R001
#15180461 Kesslers Bell 0024

#Connealy Forefront
#Ebony Lit of Conanga 840
#TC Rancher 056
Kesslers Bell 8055

Boyd Next Day 6010
Boyd Erica Dianna 9054
#16362963 +Boyd Erica Dianna 606

#+Boyd New Day 8005
Boyd Heirress 3036
#+Wulffs Ext 6106
+ACF Dianna 1248

CED	BEPD	WEPD	YEPD	MILK	CW	MARB	RE
+2	+2.6	+75	+134	+35	+49	+5.2	+1.03

R

S Packer 2439

Birth Date: 7-30-2012 Bull 17449560 Tattoo: 2439

#Felts Meat Packer 62
Connealy Packer 547
#14843207 Bestrelle of Conanga 539

#Finks 5522-6148
Graham N Mistress 8
#Dalebanks Extender 6012
#Besta of Conanga 6538

S Grid Maker 5131
S Rita 8413
#16342684 S Rita 4309

#+GAR Grid Maker
Legendary Elcona 552
#Sitz Alliance 6595
Paws Up 822 Emulation Ext

CED	BEPD	WEPD	YEPD	MILK	CW	MARB	RE
+12	-1.7	+42	+85	+17	+29	+6.63	+45

N

Connealy Right Answer 746 [AMF-CAF-D2F-DDF-M1F-NHF-OHF]

Birth Date: 1-13-2007 Bull #15832750 Tattoo: 746

#Sitz Traveler 8180
SAV Final Answer 0035 (RDF)
#13592905 SAV Emulous 8145

#GDAR Traveler 71
Sitz Everelda Entense 1137
#Bon View Bando 598
SAV Sky Emulous 2124

#Hyline Right Time 338
Happy Dell of Conanga 262
#15150733 Happy Daze of Conanga 6260

#+Leachman Right Time
Hyline Pride 265
#JLB Exacto 416
Happy Date of Conanga

CED	BEPD	WEPD	YEPD	MILK	CW	MARB	RE
+12	-5	+65	+119	+29	+29	+5.55	+11

S

WL Final Answer 071

Birth Date: 3-22-2010 Bull +16711996 Tattoo: 071

#Sitz Traveler 8180
SAV Final Answer 0035 (RDF)
#13592905 SAV Emulous 8145

#GDAR Traveler 71
Sitz Everelda Entense 1137
#Bon View Bando 598
SAV Sky Emulous 2124

#B/R New Design 036
Meadow Mist 036-190-206
#13542259 Meadow Mist 754M 103 190

#VDR New Trend 315
B/R Blackcap Empress 76
+Meadow Mist Ambassador 754
+Meadow Mist 6807 37 103 Et

CED	BEPD	WEPD	YEPD	MILK	CW	MARB	RE
+13	-1.3	+53	+85	+30	+11	+3.36	+45

O

WL War Party 127

Birth Date: 3-18-2011 Bull 17032488 Tattoo: 127

#Connealy Onward
Werner War Party 2417
#+16004857 +BAAR USA Lady Jaye 489

#Connealy Lead On
Altune of Conanga 6104
#BAR Ext Traveler 205
Cra Lady Jaye 608 498 S Easy

#SAV Final Answer 0035 (RDF)
WL 0035 Fancy Beauty 435-953
#16594892 WL 5321 Fancy Beauty 231-435

#Sitz Traveler 8180
SAV Emulous 8145
#CA Future Direction 5321
LBK Fancy Beauty 2K31

CED	BEPD	WEPD	YEPD	MILK	CW	MARB	RE
+8	+3	+58	+110	+29	+46	+3.37	+99

T

Plattermere Weigh Up K360 [DDF]

Birth Date: 2-8-2010 Bull 16692552 Tattoo: K360

#Connealy Onward
Sitz Upward 307R
#14963730 Sitz Henrietta Pride 81M

#Connealy Lead On
Altune of Conanga 6104
#Sitz Value 7097
Sitz Henrietta Pride 1370

#GAR Retail Product
Barbara of Plattermere 337
#16274856 Barbara of Plattermere 311

#GAR Precision 1680
+GAR Ext 4927
#Bon View New Design 1407
Barbara of Plattermere 286

CED	BEPD	WEPD	YEPD	MILK	CW	MARB	RE
+5	+1.4	+77	+144	+26	+68	+7.6	+83



WENDEL LIVESTOCK

Mike and Shari Wendel
10213 68th St. SE
LaMoure, ND 58458

PSRRT
FIRST CLASS
U.S. POSTAGE
PAID
Minster, OH
Permit #1

WENDEL LIVESTOCK

12th Annual Angus Production Sale

Monday • **May 9, 2016** • 7 pm
at the farm, near LaMoure, ND

Wendel Livestock 2015 Carcass Results:

First potload (40 hd) of WL steers:

40% Prime 77% Prime and CAB
100% Choice or better
\$69.90 Net premium/hd

Weighted in Genetics, Loaded with Value
Buy a WL bull and get an extra bidder on your calves!

www.wendellivestock.com